



Matthew G. Bevin
Governor

COMMONWEALTH OF KENTUCKY
TRANSPORTATION CABINET
Frankfort, Kentucky 40622
www.transportation.ky.gov/

Greg Thomas
Secretary

August 19, 2019

CALL NO. 100
CONTRACT ID NO. 191048
ADDENDUM # 1

Subject: MAGOFFIN COUNTY, NHPP 0061 (076)
Letting August 23, 2019

- (1) Revised - Proposal Bid Items - Pages 256-263 of 263
- (2) Revised - Plan Sheets - R2K, R2L, R2M, R2N, R2R, and S14

Proposal revisions are available at <http://transportation.ky.gov/Construction-Procurement/>.

If you have any questions, please contact us at 502-564-3500.

Sincerely,

A handwritten signature in cursive script that reads "Rachel Mills".

Rachel Mills, P.E.
Director
Division of Construction Procurement

RM:mr
Enclosures



An Equal Opportunity Employer M/F/D

PROPOSAL BID ITEMS

Report Date 8/19/19

Section: 0001 - PAVING

| LINE | BID CODE | ALT | DESCRIPTION | QUANTITY | UNIT | UNIT PRIC | FP | AMOUNT |
|------|----------|-----|-----------------------------|-----------|------|-----------|----|--------|
| 0010 | 00003 | | CRUSHED STONE BASE | 99,389.00 | TON | | \$ | |
| 0020 | 00100 | | ASPHALT SEAL AGGREGATE | 2,059.00 | TON | | \$ | |
| 0030 | 00103 | | ASPHALT SEAL COAT | 247.00 | TON | | \$ | |
| 0040 | 00190 | | LEVELING & WEDGING PG64-22 | 3,633.00 | TON | | \$ | |
| 0050 | 00212 | | CL2 ASPH BASE 1.00D PG64-22 | 16,556.00 | TON | | \$ | |
| 0060 | 00214 | | CL3 ASPH BASE 1.00D PG64-22 | 68,309.00 | TON | | \$ | |
| 0070 | 00301 | | CL2 ASPH SURF 0.38D PG64-22 | 4,538.00 | TON | | \$ | |
| 0080 | 00356 | | ASPHALT MATERIAL FOR TACK | 290.00 | TON | | \$ | |
| 0090 | 00388 | | CL3 ASPH SURF 0.38B PG64-22 | 11,589.00 | TON | | \$ | |

Section: 0002 - ROADWAY

| LINE | BID CODE | ALT | DESCRIPTION | QUANTITY | UNIT | UNIT PRIC | FP | AMOUNT |
|------|----------|-----|-----------------------------------------------------|--------------|------|-----------|----|--------|
| 0100 | 00078 | | CRUSHED AGGREGATE SIZE NO 2 | 88.00 | TON | | \$ | |
| 0110 | 01000 | | PERFORATED PIPE-4 IN | 13,171.00 | LF | | \$ | |
| 0120 | 01001 | | PERFORATED PIPE-6 IN | 140.00 | LF | | \$ | |
| 0130 | 01002 | | PERFORATED PIPE-8 IN | 2,400.00 | LF | | \$ | |
| 0140 | 01010 | | NON-PERFORATED PIPE-4 IN | 3,276.00 | LF | | \$ | |
| 0150 | 01020 | | PERF PIPE HEADWALL TY 1-4 IN | 51.00 | EACH | | \$ | |
| 0160 | 01022 | | PERF PIPE HEADWALL TY 1-8 IN | 48.00 | EACH | | \$ | |
| 0170 | 01024 | | PERF PIPE HEADWALL TY 2-4 IN | 1.00 | EACH | | \$ | |
| 0180 | 01028 | | PERF PIPE HEADWALL TY 3-4 IN | 1.00 | EACH | | \$ | |
| 0185 | 01711 | | FILL AND CAP WELL (ADDED: 8-16-19) | 1.00 | EACH | | \$ | |
| 0190 | 01740 | | CORED HOLE DRAINAGE BOX CON-4 IN | 4.00 | EACH | | \$ | |
| 0200 | 01741 | | CORED HOLE DRAINAGE BOX CON-6 IN | 14.00 | EACH | | \$ | |
| 0210 | 01825 | | ISLAND CURB AND GUTTER | 90.00 | LF | | \$ | |
| 0220 | 01891 | | ISLAND HEADER CURB TYPE 2 | 90.00 | LF | | \$ | |
| 0230 | 01982 | | DELINEATOR FOR GUARDRAIL MONO DIRECTIONAL WHITE | 421.00 | EACH | | \$ | |
| 0240 | 01983 | | DELINEATOR FOR GUARDRAIL MONO DIRECTIONAL YELLOW | 30.00 | EACH | | \$ | |
| 0250 | 01987 | | DELINEATOR FOR GUARDRAIL BI DIRECTIONAL WHITE | 32.00 | EACH | | \$ | |
| 0260 | 01990 | | DELINEATOR FOR BARRIER WALL-B/W | 921.00 | EACH | | \$ | |
| 0270 | 02014 | | BARRICADE-TYPE III | 14.00 | EACH | | \$ | |
| 0280 | 02091 | | REMOVE PAVEMENT | 811.00 | SQYD | | \$ | |
| 0290 | 02159 | | TEMP DITCH | 11,277.00 | LF | | \$ | |
| 0300 | 02160 | | CLEAN TEMP DITCH | 5,489.00 | LF | | \$ | |
| 0310 | 02200 | | ROADWAY EXCAVATION | 5,853,721.00 | CUYD | | \$ | |
| 0320 | 02242 | | WATER | 1,000.00 | MGAL | | \$ | |
| 0330 | 02262 | | FENCE-WOVEN WIRE TYPE 1 | 41,319.00 | LF | | \$ | |
| 0340 | 02268 | | REMOVE & REPLACE FENCE | 7,533.00 | LF | | \$ | |
| 0350 | 02351 | | GUARDRAIL-STEEL W BEAM-S FACE | 30,237.50 | LF | | \$ | |
| 0360 | 02352 | | GUARDRAIL-STEEL W BEAM-D FACE | 825.00 | LF | | \$ | |
| 0370 | 02360 | | GUARDRAIL TERMINAL SECTION NO 1 | 9.00 | EACH | | \$ | |

PROPOSAL BID ITEMS

Report Date 8/19/19

| LINE | BID CODE | ALT | DESCRIPTION | QUANTITY | UNIT | UNIT PRIC | FP | AMOUNT |
|------|----------|-----|-----------------------------------------------------------------------|------------|------|-----------|----|-------------|
| 0380 | 02363 | | GUARDRAIL CONNECTOR TO BRIDGE END TY A | 12.00 | EACH | | \$ | |
| 0390 | 02365 | | CRASH CUSHION TYPE IX-A | 6.00 | EACH | | \$ | |
| 0400 | 02367 | | GUARDRAIL END TREATMENT TYPE 1 | 47.00 | EACH | | \$ | |
| 0410 | 02369 | | GUARDRAIL END TREATMENT TYPE 2A | 7.00 | EACH | | \$ | |
| 0420 | 02371 | | GUARDRAIL END TREATMENT TYPE 7 | 1.00 | EACH | | \$ | |
| 0430 | 02373 | | GUARDRAIL END TREATMENT TYPE 3 | 1.00 | EACH | | \$ | |
| 0440 | 02378 | | GUARDRAIL CONNECTOR TO BRIDGE END TY D | 2.00 | EACH | | \$ | |
| 0450 | 02381 | | REMOVE GUARDRAIL | 22,112.00 | LF | | \$ | |
| 0460 | 02391 | | GUARDRAIL END TREATMENT TYPE 4A | 2.00 | EACH | | \$ | |
| 0470 | 02397 | | TEMP GUARDRAIL | 2,913.00 | LF | | \$ | |
| 0480 | 02429 | | RIGHT-OF-WAY MONUMENT TYPE 1 | 102.00 | EACH | | \$ | |
| 0490 | 02431 | | WITNESS R/W MONUMENT TYPE 2 | 3.00 | EACH | | \$ | |
| 0500 | 02432 | | WITNESS POST | 3.00 | EACH | | \$ | |
| 0510 | 02482 | | CHANNEL LINING CLASS IA | 2,574.00 | TON | | \$ | |
| 0520 | 02483 | | CHANNEL LINING CLASS II | 11,267.00 | TON | | \$ | |
| 0530 | 02488 | | CHANNEL LINING CLASS IV | 14,821.00 | CUYD | | \$ | |
| 0540 | 02545 | | CLEARING AND GRUBBING 176 ACRES | 1.00 | LS | | \$ | |
| 0550 | 02555 | | CONCRETE-CLASS B | 149.00 | CUYD | | \$ | |
| 0560 | 02562 | | TEMPORARY SIGNS | 3,500.00 | SQFT | | \$ | |
| 0570 | 02585 | | EDGE KEY | 105.00 | LF | | \$ | |
| 0580 | 02599 | | FABRIC-GEOTEXTILE TYPE IV | 199,217.00 | SQYD | | \$ | |
| 0590 | 02600 | | FABRIC GEOTEXTILE TY IV FOR PIPE | 15,332.00 | SQYD | \$2.00 | \$ | \$30,664.00 |
| 0600 | 02650 | | MAINTAIN & CONTROL TRAFFIC | 1.00 | LS | | \$ | |
| 0610 | 02651 | | DIVERSIONS (BY-PASS DETOURS) KY 9009 DIVERSION 2 - STA. 3524+62.35 | 1.00 | LS | | \$ | |
| 0620 | 02651 | | DIVERSIONS (BY-PASS DETOURS) KY 9009 DIVERSION 3 - STA. 3400+00 | 1.00 | LS | | \$ | |
| 0630 | 02651 | | DIVERSIONS (BY-PASS DETOURS) KY 9009 DIVERSION I - STA. 3394+55.56 | 1.00 | LS | | \$ | |
| 0640 | 02655 | | CROSSOVER CROSSOVER 1- STA. 3360+26 | 1.00 | LS | | \$ | |
| 0650 | 02655 | | CROSSOVER CROSSOVER 2 - STA. 3584+86 | 1.00 | LS | | \$ | |
| 0660 | 02655 | | CROSSOVER CROSSOVER 3 - STA. 3593+26 | 1.00 | LS | | \$ | |
| 0670 | 02671 | | PORTABLE CHANGEABLE MESSAGE SIGN | 14.00 | EACH | | \$ | |
| 0680 | 02676 | | MOBILIZATION FOR MILL & TEXT | 1.00 | LS | | \$ | |
| 0690 | 02677 | | ASPHALT PAVE MILLING & TEXTURING | 1,700.00 | TON | | \$ | |
| 0700 | 02690 | | SAFELoading | 537.00 | CUYD | | \$ | |
| 0710 | 02692 | | SETTLEMENT PLATFORM | 2.00 | EACH | | \$ | |
| 0720 | 02696 | | SHOULDER RUMBLE STRIPS | 91,890.00 | LF | | \$ | |
| 0730 | 02701 | | TEMP SILT FENCE | 10,977.00 | LF | | \$ | |
| 0740 | 02703 | | SILT TRAP TYPE A | 176.00 | EACH | | \$ | |
| 0750 | 02704 | | SILT TRAP TYPE B | 176.00 | EACH | | \$ | |
| 0760 | 02705 | | SILT TRAP TYPE C | 176.00 | EACH | | \$ | |
| 0770 | 02706 | | CLEAN SILT TRAP TYPE A | 176.00 | EACH | | \$ | |
| 0780 | 02707 | | CLEAN SILT TRAP TYPE B | 176.00 | EACH | | \$ | |
| 0790 | 02708 | | CLEAN SILT TRAP TYPE C | 176.00 | EACH | | \$ | |
| 0800 | 02711 | | SEDIMENTATION BASIN | 100.00 | CUYD | | \$ | |

PROPOSAL BID ITEMS

Report Date 8/19/19

| LINE | BID CODE | ALT | DESCRIPTION | QUANTITY | UNIT | UNIT PRIC | FP | AMOUNT |
|------|------------|-----|--------------------------------------------------------|--------------|------|-----------|----|----------------|
| 0810 | 02712 | | CLEAN SEDIMENTATION BASIN | 100.00 | CUYD | | \$ | |
| 0820 | 02726 | | STAKING | 1.00 | LS | | \$ | |
| 0830 | 02731 | | REMOVE STRUCTURE BRIDGE - STA. 3388+64 | 1.00 | LS | | \$ | |
| 0840 | 02731 | | REMOVE STRUCTURE BRIDGE OVER KY 9009 - STA. 3507+00 | 1.00 | LS | | \$ | |
| 0850 | 02775 | | ARROW PANEL | 6.00 | EACH | | \$ | |
| 0860 | 02898 | | RELOCATE CRASH CUSHION | 4.00 | EACH | | \$ | |
| 0870 | 03340 | | STEEL PIPE-2 1/2 IN | 131.25 | LF | | \$ | |
| 0880 | 03343 | | STEEL PIPE-4 IN | 126.25 | LF | | \$ | |
| 0890 | 05950 | | EROSION CONTROL BLANKET | 194,189.00 | SQYD | | \$ | |
| 0900 | 05952 | | TEMP MULCH | 567,893.00 | SQYD | | \$ | |
| 0910 | 05953 | | TEMP SEEDING AND PROTECTION | 425,920.00 | SQYD | | \$ | |
| 0920 | 05963 | | INITIAL FERTILIZER | 8.00 | TON | | \$ | |
| 0930 | 05964 | | MAINTENANCE FERTILIZER | 36.00 | TON | | \$ | |
| 0940 | 05985 | | SEEDING AND PROTECTION | 509,582.00 | SQYD | | \$ | |
| 0950 | 05992 | | AGRICULTURAL LIMESTONE | 316.00 | TON | | \$ | |
| 0960 | 06401 | | FLEXIBLE DELINEATOR POST-M/W | 361.00 | EACH | | \$ | |
| 0970 | 06404 | | FLEXIBLE DELINEATOR POST-M/Y | 95.00 | EACH | | \$ | |
| 0980 | 06510 | | PAVE STRIPING-TEMP PAINT-4 IN | 9,950.00 | LF | | \$ | |
| 0990 | 06511 | | PAVE STRIPING-TEMP PAINT-6 IN | 199,220.00 | LF | | \$ | |
| 1000 | 06514 | | PAVE STRIPING-PERM PAINT-4 IN | 4,627.00 | LF | | \$ | |
| 1010 | 06515 | | PAVE STRIPING-PERM PAINT-6 IN | 175,691.00 | LF | | \$ | |
| 1020 | 06517 | | PAVE STRIPING-PERM PAINT-12 IN | 1,584.00 | LF | | \$ | |
| 1030 | 06568 | | PAVE MARKING-THERMO STOP BAR-24IN | 127.00 | LF | | \$ | |
| 1040 | 06572 | | PAVE MARKING-DOTTED LANE EXTEN | 940.00 | LF | | \$ | |
| 1050 | 06588 | | PAVEMENT MARKER TY IVA-BY TEMP | 2,503.00 | EACH | | \$ | |
| 1060 | 08903 | | CRASH CUSHION TY VI CLASS BT TL3 | 22.00 | EACH | | \$ | |
| 1070 | 10020NS | | FUEL ADJUSTMENT | 1,078,771.00 | DOLL | \$1.00 | \$ | \$1,078,771.00 |
| 1080 | 10030NS | | ASPHALT ADJUSTMENT | 406,383.00 | DOLL | \$1.00 | \$ | \$406,383.00 |
| 1090 | 20071EC | | JOINT ADHESIVE | 48,289.00 | LF | | \$ | |
| 1100 | 20191ED | | OBJECT MARKER TY 3 | 10.00 | EACH | | \$ | |
| 1110 | 20318ES508 | | RELOCATE CONC BARRIER WALL | 10,120.00 | LF | | \$ | |
| 1120 | 22664EN | | WATER BLASTING EXISTING STRIPE | 1,000.00 | LF | | \$ | |
| 1130 | 23007EN | | CONC MEDIAN BARRIER TY 9T | 11,280.00 | LF | | \$ | |
| 1150 | 23274EN11F | | TURF REINFORCEMENT MAT 1 | 1,299.00 | SQYD | | \$ | |
| 1160 | 23496EC | | MEDIAN CROSSOVER REMOVAL STA. 3360+25.68 | 1.00 | EACH | | \$ | |
| 1170 | 24489EC | | INLAID PAVEMENT MARKER | 853.00 | EACH | | \$ | |
| 1180 | 24540 | | R/W MONUMENT TYPE 3 | 7.00 | EACH | | \$ | |
| 1190 | 24543EC | | CLEAN (CHANNEL CHANGE) | 920.00 | LF | | \$ | |
| 1200 | 24663ED | | WITNESS R/W MONUMENT TYPE 4 | 1.00 | EACH | | \$ | |
| 1210 | 24780EC | | INTELLIGENT COMPACTION FOR AGGREGATE | 25,339.00 | TON | | \$ | |
| 1220 | 24781EC | | INTELLIGENT COMPACTION FOR ASPHALT | 71,326.00 | TON | | \$ | |
| 1230 | 24891EC | | PAVE MOUNT INFRARED TEMP EQUIPMENT | 1,021,041.00 | SF | | \$ | |

PROPOSAL BID ITEMS

Report Date 8/19/19

| LINE | BID CODE | ALT | DESCRIPTION | QUANTITY | UNIT | UNIT PRIC | FP | AMOUNT |
|------|------------|-----|--------------------------------|----------|------|-----------|----|--------|
| 1240 | 00441 | | ENTRANCE PIPE-18 IN | 27.00 | LF | | \$ | |
| 1250 | 00462 | | CULVERT PIPE-18 IN | 2,166.00 | LF | | \$ | |
| 1260 | 00464 | | CULVERT PIPE-24 IN | 999.00 | LF | | \$ | |
| 1270 | 00466 | | CULVERT PIPE-30 IN | 357.00 | LF | | \$ | |
| 1280 | 00468 | | CULVERT PIPE-36 IN | 450.00 | LF | | \$ | |
| 1290 | 00469 | | CULVERT PIPE-42 IN | 129.00 | LF | | \$ | |
| 1300 | 00472 | | CULVERT PIPE-60 IN | 259.00 | LF | | \$ | |
| 1310 | 00474 | | CULVERT PIPE-72 IN | 74.00 | LF | | \$ | |
| 1320 | 00522 | | STORM SEWER PIPE-18 IN | 1,046.00 | LF | | \$ | |
| 1330 | 00524 | | STORM SEWER PIPE-24 IN | 708.00 | LF | | \$ | |
| 1340 | 01204 | | PIPE CULVERT HEADWALL-18 IN | 22.00 | EACH | | \$ | |
| 1350 | 01208 | | PIPE CULVERT HEADWALL-24 IN | 12.00 | EACH | | \$ | |
| 1360 | 01210 | | PIPE CULVERT HEADWALL-30 IN | 4.00 | EACH | | \$ | |
| 1370 | 01212 | | PIPE CULVERT HEADWALL-36 IN | 5.00 | EACH | | \$ | |
| 1380 | 01214 | | PIPE CULVERT HEADWALL-42 IN | 3.00 | EACH | | \$ | |
| 1390 | 01220 | | PIPE CULVERT HEADWALL-60 IN | 4.00 | EACH | | \$ | |
| 1400 | 01310 | | REMOVE PIPE | 8.00 | LF | | \$ | |
| 1410 | 01433 | | SLOPED BOX OUTLET TYPE 1-18 IN | 11.00 | EACH | | \$ | |
| 1420 | 01434 | | SLOPED BOX OUTLET TYPE 1-24 IN | 1.00 | EACH | | \$ | |
| 1430 | 01451 | | S & F BOX INLET-OUTLET-24 IN | 4.00 | EACH | | \$ | |
| 1440 | 01452 | | S & F BOX INLET-OUTLET-30 IN | 2.00 | EACH | | \$ | |
| 1450 | 01480 | | CURB BOX INLET TYPE B | 10.00 | EACH | | \$ | |
| 1460 | 01490 | | DROP BOX INLET TYPE 1 | 4.00 | EACH | | \$ | |
| 1470 | 01505 | | DROP BOX INLET TYPE 5B | 16.00 | EACH | | \$ | |
| 1480 | 01517 | | DROP BOX INLET TYPE 5F | 22.00 | EACH | | \$ | |
| 1490 | 01653 | | JUNCTION BOX-SPECIAL | 6.00 | EACH | | \$ | |
| 1500 | 01767 | | MANHOLE TYPE C | 1.00 | EACH | | \$ | |
| 1510 | 01771 | | FRAME AND LID TY 1 | 1.00 | EACH | | \$ | |
| 1520 | 02625 | | REMOVE HEADWALL | 2.00 | EACH | | \$ | |
| 1530 | 20211ES706 | | BORE & JACK PIPE 60 IN | 140.00 | LF | | \$ | |
| 1540 | 21799EN | | BORE AND JACK PIPE-24 IN | 75.00 | LF | | \$ | |
| 1560 | 23126EN | | BORE AND JACK PIPE-18 IN | 77.00 | LF | | \$ | |
| 1570 | 24025EC | | PIPE CULVERT HEADWALL-72 IN | 2.00 | EACH | | \$ | |
| 1580 | 24186EC | | BORE AND JACK PIPE-36 IN | 240.00 | LF | | \$ | |
| 1590 | 24814EC | | PIPELINE INSPECTION | 7,145.00 | LF | | \$ | |

Section: 0004 - BRIDGE- #27712 PCIB TYPE III TWIN SPANS

| LINE | BID CODE | ALT | DESCRIPTION | QUANTITY | UNIT | UNIT PRIC | FP | AMOUNT |
|------|----------|-----|------------------------------|----------|------|-----------|----|--------|
| 1600 | 02231 | | STRUCTURE GRANULAR BACKFILL | 780.00 | CUYD | | \$ | |
| 1610 | 02998 | | MASONRY COATING | 1,434.00 | SQYD | | \$ | |
| 1620 | 03299 | | ARMORED EDGE FOR CONCRETE | 175.00 | LF | | \$ | |
| 1630 | 08020 | | CRUSHED AGGREGATE SLOPE PROT | 467.00 | TON | | \$ | |
| 1640 | 08033 | | TEST PILES | 148.00 | LF | | \$ | |
| 1650 | 08046 | | PILES-STEEL HP12X53 | 930.00 | LF | | \$ | |
| 1660 | 08094 | | PILE POINTS-12 IN | 28.00 | EACH | | \$ | |
| 1670 | 08100 | | CONCRETE-CLASS A | 313.90 | CUYD | | \$ | |
| 1680 | 08104 | | CONCRETE-CLASS AA | 693.30 | CUYD | | \$ | |

PROPOSAL BID ITEMS

Report Date 8/19/19

| LINE | BID CODE | ALT | DESCRIPTION | QUANTITY | UNIT | UNIT PRIC | FP | AMOUNT |
|------|----------|-----|----------------------------------|------------|------|-----------|----|--------|
| 1690 | 08150 | | STEEL REINFORCEMENT | 48,524.00 | LB | | \$ | |
| 1700 | 08151 | | STEEL REINFORCEMENT-EPOXY COATED | 148,409.00 | LB | | \$ | |
| 1710 | 08633 | | PRECAST PC I BEAM TYPE 3 | 2,391.70 | LF | | \$ | |
| 1720 | 20637ED | | DRILLED SHAFT-ROCK 48 IN | 144.00 | LF | | \$ | |
| 1730 | 20746ED | | ROCK CORINGS | 288.00 | LF | | \$ | |
| 1740 | 21084ED | | SOUNDINGS | 258.00 | LF | | \$ | |
| 1750 | 21532ED | | RAIL SYSTEM TYPE III | 974.00 | LF | | \$ | |
| 1760 | 22417EN | | DRILLED SHAFT-54 IN-COMMON | 258.00 | LF | | \$ | |

Section: 0005 - BRIDGE- #27713 PCIB TYPE IV TWIN BRIDGE

| LINE | BID CODE | ALT | DESCRIPTION | QUANTITY | UNIT | UNIT PRIC | FP | AMOUNT |
|------|----------|-----|----------------------------------|------------|------|-----------|----|--------|
| 1770 | 02231 | | STRUCTURE GRANULAR BACKFILL | 504.00 | CUYD | | \$ | |
| 1780 | 02998 | | MASONRY COATING | 1,244.00 | SQYD | | \$ | |
| 1790 | 03299 | | ARMORED EDGE FOR CONCRETE | 177.00 | LF | | \$ | |
| 1800 | 08001 | | STRUCTURE EXCAVATION-COMMON | 558.00 | CUYD | | \$ | |
| 1810 | 08002 | | STRUCTURE EXCAV-SOLID ROCK | 519.00 | CUYD | | \$ | |
| 1820 | 08019 | | CYCLOPEAN STONE RIP RAP | 868.00 | TON | | \$ | |
| 1830 | 08020 | | CRUSHED AGGREGATE SLOPE PROT | 301.00 | TON | | \$ | |
| 1840 | 08033 | | TEST PILES | 150.00 | LF | | \$ | |
| 1850 | 08039 | | PRE-DRILLING FOR PILES | 140.00 | LF | | \$ | |
| 1860 | 08050 | | PILES-STEEL HP14X73 | 771.00 | LF | | \$ | |
| 1870 | 08095 | | PILE POINTS-14 IN | 28.00 | EACH | | \$ | |
| 1880 | 08100 | | CONCRETE-CLASS A | 689.20 | CUYD | | \$ | |
| 1890 | 08104 | | CONCRETE-CLASS AA | 1,119.20 | CUYD | | \$ | |
| 1900 | 08150 | | STEEL REINFORCEMENT | 159,193.00 | LB | | \$ | |
| 1910 | 08151 | | STEEL REINFORCEMENT-EPOXY COATED | 159,303.00 | LB | | \$ | |
| 1920 | 08634 | | PRECAST PC I BEAM TYPE 4 | 3,786.00 | LF | | \$ | |
| 1930 | 20743ED | | DRILLED SHAFT 54 IN-SOLID ROCK | 162.00 | LF | | \$ | |
| 1940 | 20744ED | | DRILLED SHAFT 60 IN-COMMON | 310.50 | LF | | \$ | |
| 1950 | 21532ED | | RAIL SYSTEM TYPE III | 1,534.00 | LF | | \$ | |

Section: 0006 - BRIDGE- #27714 PCIB TYPE III 3 SPANS-WB

| LINE | BID CODE | ALT | DESCRIPTION | QUANTITY | UNIT | UNIT PRIC | FP | AMOUNT |
|------|----------|-----|----------------------------------|-----------|------|-----------|----|--------|
| 1960 | 02231 | | STRUCTURE GRANULAR BACKFILL | 206.00 | CUYD | | \$ | |
| 1970 | 02998 | | MASONRY COATING | 1,106.00 | SQYD | | \$ | |
| 1980 | 03299 | | ARMORED EDGE FOR CONCRETE | 83.00 | LF | | \$ | |
| 1990 | 08001 | | STRUCTURE EXCAVATION-COMMON | 6.00 | CUYD | | \$ | |
| 2000 | 08020 | | CRUSHED AGGREGATE SLOPE PROT | 255.00 | TON | | \$ | |
| 2010 | 08033 | | TEST PILES | 248.00 | LF | | \$ | |
| 2020 | 08050 | | PILES-STEEL HP14X73 | 1,838.00 | LF | | \$ | |
| 2030 | 08095 | | PILE POINTS-14 IN | 38.00 | EACH | | \$ | |
| 2040 | 08100 | | CONCRETE-CLASS A | 361.20 | CUYD | | \$ | |
| 2050 | 08104 | | CONCRETE-CLASS AA | 271.00 | CUYD | | \$ | |
| 2060 | 08150 | | STEEL REINFORCEMENT | 51,538.00 | LB | | \$ | |
| 2070 | 08151 | | STEEL REINFORCEMENT-EPOXY COATED | 52,148.00 | LB | | \$ | |

PROPOSAL BID ITEMS

Report Date 8/19/19

| LINE | BID CODE | ALT | DESCRIPTION | QUANTITY | UNIT | UNIT PRIC | FP | AMOUNT |
|------|----------|-----|--------------------------|----------|------|-----------|----|--------|
| 2080 | 08633 | | PRECAST PC I BEAM TYPE 3 | 817.40 | LF | | \$ | |
| 2090 | 21532ED | | RAIL SYSTEM TYPE III | 334.00 | LF | | \$ | |

Section: 0007 - BRIDGE- #27714 PCIB TYPE III 3 SPANS-EB

| LINE | BID CODE | ALT | DESCRIPTION | QUANTITY | UNIT | UNIT PRIC | FP | AMOUNT |
|------|----------|-----|----------------------------------|-----------|------|-----------|----|--------|
| 2100 | 02231 | | STRUCTURE GRANULAR BACKFILL | 206.00 | CUYD | | \$ | |
| 2110 | 02998 | | MASONRY COATING | 1,026.00 | SQYD | | \$ | |
| 2120 | 03299 | | ARMORED EDGE FOR CONCRETE | 83.00 | LF | | \$ | |
| 2130 | 08001 | | STRUCTURE EXCAVATION-COMMON | 47.00 | CUYD | | \$ | |
| 2140 | 08020 | | CRUSHED AGGREGATE SLOPE PROT | 360.00 | TON | | \$ | |
| 2150 | 08033 | | TEST PILES | 227.00 | LF | | \$ | |
| 2160 | 08050 | | PILES-STEEL HP14X73 | 1,700.00 | LF | | \$ | |
| 2170 | 08095 | | PILE POINTS-14 IN | 38.00 | EACH | | \$ | |
| 2180 | 08100 | | CONCRETE-CLASS A | 350.60 | CUYD | | \$ | |
| 2190 | 08104 | | CONCRETE-CLASS AA | 257.10 | CUYD | | \$ | |
| 2200 | 08150 | | STEEL REINFORCEMENT | 50,480.00 | LB | | \$ | |
| 2210 | 08151 | | STEEL REINFORCEMENT-EPOXY COATED | 46,769.00 | LB | | \$ | |
| 2220 | 08633 | | PRECAST PC I BEAM TYPE 3 | 757.40 | LF | | \$ | |
| 2230 | 21532ED | | RAIL SYSTEM TYPE III | 310.00 | LF | | \$ | |

Section: 0008 - BRIDGE- #27715 - RFBC - KY 9009 STA.3424+29.29

| LINE | BID CODE | ALT | DESCRIPTION | QUANTITY | UNIT | UNIT PRIC | FP | AMOUNT |
|------|----------|-----|----------------------------|------------|------|-----------|----|--------|
| 2240 | 08002 | | STRUCTURE EXCAV-SOLID ROCK | 85.00 | CUYD | | \$ | |
| 2250 | 08003 | | FOUNDATION PREPARATION | 1.00 | LS | | \$ | |
| 2260 | 08100 | | CONCRETE-CLASS A | 763.90 | CUYD | | \$ | |
| 2270 | 08150 | | STEEL REINFORCEMENT | 137,720.00 | LB | | \$ | |

Section: 0009 - BRIDGE- #27716 - RFBC - KY 9009 STA.3433+85

| LINE | BID CODE | ALT | DESCRIPTION | QUANTITY | UNIT | UNIT PRIC | FP | AMOUNT |
|------|----------|-----|----------------------------|------------|------|-----------|----|--------|
| 2280 | 08002 | | STRUCTURE EXCAV-SOLID ROCK | 115.00 | CUYD | | \$ | |
| 2290 | 08003 | | FOUNDATION PREPARATION | 1.00 | LS | | \$ | |
| 2300 | 08100 | | CONCRETE-CLASS A | 890.40 | CUYD | | \$ | |
| 2310 | 08150 | | STEEL REINFORCEMENT | 206,844.00 | LB | | \$ | |

Section: 0010 - BRIDGE- #27717 - RFBC - KY 9009 STA.3451+70.98

| LINE | BID CODE | ALT | DESCRIPTION | QUANTITY | UNIT | UNIT PRIC | FP | AMOUNT |
|------|----------|-----|----------------------------|------------|------|-----------|----|--------|
| 2320 | 08002 | | STRUCTURE EXCAV-SOLID ROCK | 320.00 | CUYD | | \$ | |
| 2330 | 08003 | | FOUNDATION PREPARATION | 1.00 | LS | | \$ | |
| 2340 | 08100 | | CONCRETE-CLASS A | 1,931.30 | CUYD | | \$ | |
| 2350 | 08150 | | STEEL REINFORCEMENT | 382,052.00 | LB | | \$ | |

PROPOSAL BID ITEMS

Report Date 8/19/19

Section: 0011 - BRIDGE- #27718 - RFBC - KY 9009 STA. 3479+21

| LINE | BID CODE | ALT | DESCRIPTION | QUANTITY | UNIT | UNIT PRIC | FP | AMOUNT |
|------|----------|-----|-----------------------------|------------|------|-----------|----|--------|
| 2360 | 02223 | | GRANULAR EMBANKMENT | 29,927.00 | CUYD | | \$ | |
| 2370 | 02599 | | FABRIC-GEOTEXTILE TYPE IV | 18,832.00 | SQYD | | \$ | |
| 2380 | 08001 | | STRUCTURE EXCAVATION-COMMON | 5.00 | CUYD | | \$ | |
| 2390 | 08100 | | CONCRETE-CLASS A | 1,529.00 | CUYD | | \$ | |
| 2400 | 08150 | | STEEL REINFORCEMENT | 170,676.00 | LB | | \$ | |

Section: 0012 - BRIDGE- #27719 - DOUBLE RFBC - KY 9009 STA. 3503+70

| LINE | BID CODE | ALT | DESCRIPTION | QUANTITY | UNIT | UNIT PRIC | FP | AMOUNT |
|------|----------|-----|-----------------------------|------------|------|-----------|----|--------|
| 2410 | 02223 | | GRANULAR EMBANKMENT | 21,336.00 | CUYD | | \$ | |
| 2420 | 02599 | | FABRIC-GEOTEXTILE TYPE IV | 5,970.00 | SQYD | | \$ | |
| 2430 | 08001 | | STRUCTURE EXCAVATION-COMMON | 3,393.00 | CUYD | | \$ | |
| 2440 | 08100 | | CONCRETE-CLASS A | 5,671.00 | CUYD | | \$ | |
| 2450 | 08150 | | STEEL REINFORCEMENT | 615,334.00 | LB | | \$ | |

Section: 0013 - BRIDGE- #27720 - RCBC - KY 3046 STA.46+65

| LINE | BID CODE | ALT | DESCRIPTION | QUANTITY | UNIT | UNIT PRIC | FP | AMOUNT |
|------|----------|-----|-----------------------------|-----------|------|-----------|----|--------|
| 2460 | 02223 | | GRANULAR EMBANKMENT | 615.00 | CUYD | | \$ | |
| 2470 | 02599 | | FABRIC-GEOTEXTILE TYPE IV | 914.00 | SQYD | | \$ | |
| 2480 | 08001 | | STRUCTURE EXCAVATION-COMMON | 1,265.00 | CUYD | | \$ | |
| 2490 | 08100 | | CONCRETE-CLASS A | 193.00 | CUYD | | \$ | |
| 2500 | 08150 | | STEEL REINFORCEMENT | 30,169.00 | LB | | \$ | |

Section: 0014 - SIGNING

| LINE | BID CODE | ALT | DESCRIPTION | QUANTITY | UNIT | UNIT PRIC | FP | AMOUNT |
|------|----------|-----|-------------------------------|----------|------|-----------|----|--------|
| 2510 | 06400 | | GMSS GALV STEEL TYPE A | 2,331.00 | LB | | \$ | |
| 2520 | 06405 | | SBM ALUMINUM PANEL SIGNS | 934.60 | SQFT | | \$ | |
| 2530 | 06406 | | SBM ALUM SHEET SIGNS .080 IN | 108.00 | SQFT | | \$ | |
| 2540 | 06407 | | SBM ALUM SHEET SIGNS .125 IN | 304.50 | SQFT | | \$ | |
| 2550 | 06410 | | STEEL POST TYPE 1 | 473.50 | LF | | \$ | |
| 2560 | 06412 | | STEEL POST MILE MARKERS | 8.00 | EACH | | \$ | |
| 2570 | 06441 | | GMSS GALV STEEL TYPE C | 3,150.00 | LB | | \$ | |
| 2580 | 06490 | | CLASS A CONCRETE FOR SIGNS | 9.30 | CUYD | | \$ | |
| 2590 | 06491 | | STEEL REINFORCEMENT FOR SIGNS | 385.00 | LB | | \$ | |
| 2600 | 20419ND | | ROADWAY CROSS SECTION | 7.00 | EACH | | \$ | |
| 2610 | 21373ND | | REMOVE SIGN | 13.00 | EACH | | \$ | |
| 2620 | 21596ND | | GMSS TYPE D | 4.00 | EACH | | \$ | |
| 2630 | 24631EC | | BARCODE SIGN INVENTORY | 70.00 | EACH | | \$ | |

Section: 0015 - WATERLINE

PROPOSAL BID ITEMS

Report Date 8/19/19

Section: 0015 - WATERLINE

| LINE | BID CODE | ALT | DESCRIPTION | QUANTITY | UNIT | UNIT PRIC | FP | AMOUNT |
|------|----------|-----|------------------------------------|----------|------|-----------|----|--------|
| 2640 | 02220 | | FLOWABLE FILL | 400.00 | CUYD | | \$ | |
| 2650 | 14003 | | W CAP EXISTING MAIN | 2.00 | EACH | | \$ | |
| 2660 | 14006 | | W ENCASMENT STEEL BORED RANGE 1 | 20.00 | LF | | \$ | |
| 2670 | 14012 | | W ENCASMENT STEEL OPEN CUT RANGE 1 | 790.00 | LF | | \$ | |
| 2680 | 14023 | | W FLUSHING ASSEMBLY | 2.00 | EACH | | \$ | |
| 2690 | 14028 | | W METER 3/4 INCH | 1.00 | EACH | | \$ | |
| 2700 | 14057 | | W PIPE PVC 03 INCH | 1,285.00 | LF | | \$ | |
| 2710 | 14058 | | W PIPE PVC 04 INCH | 770.00 | LF | | \$ | |
| 2720 | 14080 | | W SERV PE/PLST LONG SIDE 3/4 IN | 1.00 | EACH | | \$ | |
| 2730 | 14089 | | W TAPPING SLEEVE AND VALVE SIZE 1 | 2.00 | EACH | | \$ | |
| 2740 | 14092 | | W TIE-IN 03 INCH | 2.00 | EACH | | \$ | |
| 2750 | 14103 | | W VALVE 03 INCH | 2.00 | EACH | | \$ | |
| 2760 | 14153 | | W LEAK DETECTION METER | 1.00 | EACH | | \$ | |

Section: 0016 - TRAINEES

| LINE | BID CODE | ALT | DESCRIPTION | QUANTITY | UNIT | UNIT PRIC | FP | AMOUNT |
|------|----------|-----|---------------------------------------------------------------|----------|------|-----------|----|--------|
| 2770 | 02742 | | TRAINEE PAYMENT REIMBURSEMENT (1 GROUP 2, 3 OR 4 OPERATOR) | 1,400.00 | HOUR | | \$ | |
| 2780 | 02742 | | TRAINEE PAYMENT REIMBURSEMENT (1 IRONWORKER) | 1,400.00 | HOUR | | \$ | |

Section: 0017 - DEMOBILIZATION &/OR MOBILIZATION

| LINE | BID CODE | ALT | DESCRIPTION | QUANTITY | UNIT | UNIT PRIC | FP | AMOUNT |
|------|----------|-----|----------------|----------|------|-----------|----|--------|
| 2790 | 02568 | | MOBILIZATION | 1.00 | LS | | \$ | |
| 2800 | 02569 | | DEMOBILIZATION | 1.00 | LS | | \$ | |

GENERAL SUMMARY

| ITEM | DESCRIPTION | UNIT | KY 9009 | KY 3047 | KY 3046 | RAMP 1 | RAMP 2 | RAMP 3 | RAMP 4 | EAST PKWY DR. | CROSSOVER STA. 3360+26 | CROSSOVER STA. 3584+86 | CROSSOVER STA. 3593+26 | DIVERSION STA. 3394+55 | DIVERSION STA. 3524+62 | DIVERSION STA. 3400+00 | TOTALS |
|------|----------------------------------------------------|------|---------|---------|---------|--------|--------|--------|--------|---------------|------------------------|------------------------|------------------------|------------------------|------------------------|------------------------|---------|
| 78 | CRUSHED AGGREGATE SIZE NO. 2 | TON | | | | | | | | | | | | | | | 88 |
| 1002 | PERFORATED PIPE-8 IN | LF | 2400 | | | | | | | | | | | | | | 2400 |
| 1022 | PERF PIPE HEADWALL TY 1-8 IN | EACH | 48 | | | | | | | | | | | | | | 48 |
| 1711 | FILL AND CAP WELL | EACH | 1 | | | | | | | | | | | | | | 1 |
| 1825 | ISLAND CURB AND GUTTER | LF | 90 | | | | | | | | | | | | | | 90 |
| 1891 | ISLAND HEADER CURB TYPE 2 | LF | 90 | | | | | | | | | | | | | | 90 |
| 1982 | DELINEATOR FOR GUARDRAIL MONO DIRECTIONAL WHITE | EACH | 369 | | | 23 | 22 | | 7 | | | | | | | | 421 |
| 1983 | DELINEATOR FOR GUARDRAIL MONO DIRECTIONAL YELLOW | EACH | 30 | | | | | | | | | | | | | | 30 |
| 1987 | DELINEATOR FOR GUARDRAIL BIDIRECTIONAL WHITE | EACH | | | 19 | | | | | 13 | | | | | | | 32 |
| 1990 | DELINEATOR FOR BARRIER WALL-B/W | EACH | 921 | | | | | | | | | | | | | | 921 |
| 2014 | BARRICADE-TYPE III | EACH | 10 | | 4 | | | | | | | | | | | | 14 |
| 2091 | REMOVE PAVEMENT | SOYD | 524 | | 149 | | | | | 138 | | | | | | | 811 |
| 2159 | TEMP DITCH | LF | 10977 | | | | | | | | | | | | | | 11277 |
| 2160 | CLEAN TEMP DITCH | LF | 5489 | | | | | | | | | | | | | | 5489 |
| 2200 | ROADWAY EXCAVATION | CUYD | 5853721 | | | | | | | | | | | | | | 5853721 |
| 2242 | WATER | MGAL | 1000 | | | | | | | | | | | | | | 1000 |
| 2262 | FENCE-WOVEN WIRE TYPE 1 | LF | 41177 | | 142 | | | | | | | | | | | | 41319 |
| 2268 | REMOVE & REPLACE FENCE (WOVEN WIRE FENCE TYPE 1) | LF | 6434 | | 1099 | | | | | | | | | | | | 7533 |
| 2351 | GUARDRAIL-STEEL W BEAM-S FACE | LF | 22950.0 | 387.5 | 1987.5 | 1137.5 | 1587.5 | 537.5 | 425.0 | 1225.0 | | | | | | | 30237.5 |
| 2352 | GUARDRAIL-STEEL W BEAM-D FACE | LF | 825.0 | | | | | | | | | | | | | | 825 |
| 2360 | GUARDRAIL TERMINAL SECTION NO 1 | EACH | 8 | | | | | | | 1 | | | | | | | 9 |
| 2363 | GUARDRAIL CONNECTOR TO BRIDGE END TY A | EACH | 12 | | | | | | | | | | | | | | 12 |
| 2365 | CRASH CUSHION TYPE IX-A | EACH | 6 | | | | | | | | | | | | | | 6 |
| 2367 | GUARDRAIL END TREATMENT TYPE 1 | EACH | 35 | | 1 | | | 1 | 1 | | | | | | | | 47 |
| 2369 | GUARDRAIL END TREATMENT TYPE 2A | EACH | 6 | | | | | | | | | | | | | | 7 |
| 2371 | GUARDRAIL END TREATMENT TYPE 7 | EACH | | | | 1 | | | | 1 | | | | | | | 1 |
| 2373 | GUARDRAIL END TREATMENT TYPE 3 | EACH | | | | 1 | | | | | | | | | | | 1 |
| 2378 | GUARDRAIL CONNECTOR TO BRIDGE END TY D | EACH | | | | | | | | | | | | | | | 2 |
| 2381 | REMOVE GUARDRAIL | LF | 20415 | | 1697 | | | | | | | | | | | | 22112 |
| 2391 | GUARDRAIL END TREATMENT TYPE 4A | EACH | | 2 | | | | | | | | | | | | | 2 |
| 2397 | TEMP GUARDRAIL | LF | 1062.5 | | | | | | | | | | | | | | 2913 |
| 2429 | RIGHT-OF-WAY MONUMENT TYPE 1 | EACH | 98 | | 4 | | | | | | | | | 1350 | 500 | | 102 |
| 2431 | WITNESS R/W MONUMENT TYPE 2 | EACH | 3 | | | | | | | | | | | | | | 3 |
| 2432 | WITNESS POST | EACH | 3 | | | | | | | | | | | | | | 3 |
| 2482 | CHANNEL LINING CLASS IA | TON | 2393 | | | 38 | | | 143 | | | | | | | | 2574 |
| 2483 | CHANNEL LINING CLASS II | TON | 11267 | | | | | | | | | | | | | | 11267 |
| 2488 | CHANNEL LINING CLASS IV | CUYD | 7205 | 320 | 341 | 813 | 1190 | | 524 | 1168 | | | | | | | 14821 |
| 2545 | CLEARING AND GRUBBING | LS | 1 | | | | | | | | | | | | | | 1 |
| 2555 | CONCRETE-CLASS B | CUYD | 103.80 | | 4.80 | | | | | | | | | | | | 523 |
| 2562 | TEMPORARY SIGNS | SOFT | 3500 | | | | | | | | | | | | | | 3500 |
| 2568 | MOBILIZATION | LS | 1 | | | | | | | | | | | | | | 1 |
| 2569 | DEMOBILIZATION | LS | 1 | | | | | | | | | | | | | | 1 |
| 2585 | EDGE KEY | LF | | 32 | 59 | | | | | 14 | | | | | | | 105 |
| 2599 | FABRIC-GEOTEXTILE TYPE IV | SOYD | 184523 | | | 2438 | 7597 | | 2515 | 2144 | | | | | | | 199217 |
| 2600 | FABRIC GEOTEXTILE TY IV FOR PIPE | SOYD | 13709 | | 733 | 173 | | 130 | 105 | 482 | | | | | | | 15332 |
| 2650 | MAINTAIN & CONTROL TRAFFIC | LS | 1 | | | | | | | | | | | | | | 1 |
| 2651 | DIVERSIONS (KY 9009 DIVERSION 1 - Sta. 3394+55.56) | LS | 1 | | | | | | | | | | | | | | 1 |
| 2651 | DIVERSIONS (KY 9009 DIVERSION 2 - Sta. 3524+62.35) | LS | 1 | | | | | | | | | | | | | | 1 |
| 2651 | DIVERSIONS (KY 9009 DIVERSION 3 - Sta. 3400+00) | LS | 1 | | | | | | | | | | | | | | 1 |
| 2655 | CROSSOVER 1 | LS | 1 | | | | | | | | | | | | | | 1 |
| 2655 | CROSSOVER 2 | LS | 1 | | | | | | | | | | | | | | 1 |
| 2655 | CROSSOVER 3 | LS | 1 | | | | | | | | | | | | | | 1 |
| 2671 | PORTABLE CHANGEABLE MESSAGE SIGN | EACH | 14 | | | | | | | | | | | | | | 14 |
| 2676 | MOBILIZATION FOR MILL & TEXT | LS | 1 | | | | | | | | | | | | | | 1 |
| 2677 | ASPHALT PAVE MILLING & TEXTURING | TON | 1700 | | | | | | | | | | | | | | 1700 |
| 2690 | SAFELOADING | CUYD | 314 | | | | | | | | | | | | | | 314 |

NOTES:

EROSION CONTROL QUANTITIES ARE BASED ON THE PROBABLE AMOUNT OF EROSION CONTROL FEATURES AS ESTIMATED BY THE DESIGNER.

- (A) FOR CONTROLLING DUST CAUSED BY MAINTAINING TRAFFIC ONLY
- (B) END TREATMENT TYPE 1 - 6 FOR MOT
- (C) GUARDRAIL REMOVED SHALL BE TRANSPORTED TO THE BAILY BRIDGE LOT @ 1224 WILKINSON BLVD. IN FRANKFORT, KENTUCKY. PAYMENT SHALL BE INCIDENTAL TO BID ITEM 2381 (REMOVE GUARDRAIL)
- (D) INCLUDES 3901 CUYD FROM DT. NOTES INCLUDES 3260 CUYD FROM PIPE SUM.
- (E) APPROXIMATELY 176 ACRES
- (F) 108.6 CUYD FOR ROW FENCE INSTALLATION 374 CUYD FROM CHANNEL LINING 40 CUYD FROM PIPE SUMMARY
- (G) FOR WRAPPING PIPE TRENCH BACKFILL
- (H) INCLUDES 1000 TONS FOR KY 9009 OVERLAY INCLUDES 500 TONS FOR THE REMOVAL OF THE EXISTING WEST CROSSOVER AND CROSSOVER 1 PAVEMENT OVER THE EXISTING EASTBOUND KY 9009 LANES. SEE CROSSOVER 1 CROSS-SECTIONS FOR MORE INFORMATION. INCLUDES 200 TONS FOR 1.25" MILLING FOR THE REMOVAL OF THE EXISTING LANE DROP PAVEMENT MARKINGS AND CHEVRONS WEST OF STATION 3374+00.
- (I) INCLUDES 2393 CUYD FROM DT. NOTES INCLUDES 179 CUYD FROM PIPE SUM.
- (J) FOR MAINTENANCE OF TRAFFIC
- (K) 52 TONS FROM PERFORATED PIPE DRAINAGE SUMMARY 36 TONS FOR PERF PIPE HEADWALL TY 1-8IN FOR BRIDGE ENDS
- (L) FOR EMBANKMENT AT BRIDGE ENDS
- (M) FOR STABILIZING MEDIAN DITCH WHEN GRADES EXCEED 3%

| | |
|----------------------------------------|--|
| EARTHWORK CALCULATIONS: | |
| EMBANKMENT: | |
| 4,050,860 CUYD EMB. | |
| 1,659,400 CUYD ROCK EMB. | |
| 211,218 CUYD RRB | |
| 5,921,478 CUYD EMB. TOTAL | |
| EXCAVATION: | |
| 948,586 CUYD COM. EXC. | |
| 4,579,386 CUYD ROCK EXC. | |
| 66,179 CUYD DIT EXC. | |
| 178,219 CUYD BENCHING | |
| 81,351 CUYD PROFILE BENCHING | |
| 5,853,721 CUYD TOTAL EXCAVATION | |
| **INCLUDES 1174 CUYD FROM PIPE SUMMARY | |

The estimate for earthwork calculations is for information only. Assumptions for shrinkage and swell factors are the contractor's responsibility.

THE EARTHWORK SHOWN ABOVE IS FOR INFORMATION ONLY. ASSUMPTIONS FOR SHRINKAGE AND SWELL FACTORS ARE THE CONTRACTOR'S RESPONSIBILITY.

GENERAL SUMMARY

| ITEM | DESCRIPTION | UNIT | KY 9009 | KY 3047 | KY 3046 | RAMP 1 | RAMP 2 | RAMP 3 | RAMP 4 | EAST DR. | CROSSOVER STA. 3360+26 | CROSSOVER STA. 3584+86 | CROSSOVER STA. 3593+26 | DIVERSION STA. 3394+55 | DIVERSION STA. 3524+62 | DIVERSION STA. 3400+00 | TOTALS |
|------|----------------------------------------------------|------|---------|---------|---------|--------|--------|--------|--------|----------|------------------------|------------------------|------------------------|------------------------|------------------------|------------------------|---------|
| 78 | CRUSHED AGGREGATE SIZE NO. 2 | TON | | | | | | | | | | | | | | | 88 |
| 1002 | PERFORATED PIPE-8 IN | LF | 2400 | | | | | | | | | | | | | | 2400 |
| 1022 | PERF PIPE HEADWALL TX 1-8 IN | EACH | 48 | | | | | | | | | | | | | | 48 |
| 1711 | FILL AND CAP WELL | EACH | 1 | | | | | | | | | | | | | | 1 |
| 1825 | ISLAND CURB AND OUTER | LF | 90 | | | | | | | | | | | | | | 90 |
| 1891 | ISLAND HEADER CURB TYPE 2 | LF | 90 | | | | | | | | | | | | | | 90 |
| 1982 | DELINEATOR FOR GUARDRAIL MONO DIRECTIONAL WHITE | EACH | 369 | | | 23 | 22 | | 7 | | | | | | | | 421 |
| 1983 | DELINEATOR FOR GUARDRAIL MONO DIRECTIONAL YELLOW | EACH | 30 | | | | | | | | | | | | | | 30 |
| 1987 | DELINEATOR FOR GUARDRAIL BIDIRECTIONAL WHITE | EACH | 921 | | 19 | | | | | 13 | | | | | | | 32 |
| 1990 | DELINEATOR FOR BARRIER WALL-B/W | EACH | 10 | | 4 | | | | | | | | | | | | 14 |
| 2014 | BARRICADE-TYPE III | SOYD | 524 | | 149 | | | | | 138 | | | | | | | 811 |
| 2091 | REMOVE PAVEMENT | LF | 10977 | | | | | | | | | | | | | | 11277 |
| 2159 | TEMP DITCH | LF | 5489 | | | | | | | | | | | | | | 5489 |
| 2160 | CLEAN TEMP DITCH | CUYD | 5853721 | | | | | | | | | | | | | | 5853721 |
| 2200 | ROADWAY EXCAVATION | MGAL | 1000 | | | | | | | | | | | | | | 1000 |
| 2242 | WATER | LF | 41177 | | 142 | | | | | | | | | | | | 41319 |
| 2262 | FENCE-WOVEN WIRE TYPE 1 | LF | 6434 | | 1099 | | | | | | | | | | | | 7533 |
| 2268 | REMOVE & REPLACE FENCE (WOVEN WIRE FENCE TYPE 1) | LF | 22950.0 | 387.5 | 1987.5 | 1137.5 | 1587.5 | 537.5 | 425.0 | 1225.0 | | | | | | | 30237.5 |
| 2351 | GUARDRAIL-STEEL W BEAM-S FACE | LF | 825.0 | | | | | | | | | | | | | | 825 |
| 2352 | GUARDRAIL-STEEL W BEAM-D FACE | EACH | 8 | | | | | | | 1 | | | | | | | 9 |
| 2360 | GUARDRAIL TERMINAL SECTION NO 1 | EACH | 12 | | | | | | | | | | | | | | 12 |
| 2363 | GUARDRAIL CONNECTOR TO BRIDGE END TY A | EACH | 6 | | | | | | | | | | | | | | 6 |
| 2365 | CRASH CUSHION TYPE IX-A | EACH | 35 | | 1 | | | | 1 | | | | | | | | 47 |
| 2367 | GUARDRAIL END TREATMENT TYPE 1 | EACH | 6 | | | | | | | | | | | | | | 7 |
| 2369 | GUARDRAIL END TREATMENT TYPE 2A | EACH | 1 | | | | | | | | | | | | | | 1 |
| 2371 | GUARDRAIL END TREATMENT TYPE 7 | EACH | 1 | | | | | | | | | | | | | | 1 |
| 2373 | GUARDRAIL END TREATMENT TYPE 3 | EACH | 1 | | | | | | | | | | | | | | 1 |
| 2378 | GUARDRAIL CONNECTOR TO BRIDGE END TY D | EACH | | | | | | | | | | | | | | | 2 |
| 2381 | REMOVE GUARDRAIL | LF | 20415 | | 1697 | | | | | | | | | | | | 22112 |
| 2391 | GUARDRAIL END TREATMENT TYPE 4A | EACH | | 2 | | | | | | | | | | | | | 2 |
| 2397 | TEMP GUARDRAIL | LF | 1062.5 | | | | | | | | | | | | | | 2913 |
| 2429 | RIGHT-OF-WAY MONUMENT TYPE 1 | EACH | 98 | | 4 | | | | | | | | 1350 | 500 | | | 102 |
| 2431 | WITNESS R/W MONUMENT TYPE 2 | EACH | 3 | | | | | | | | | | | | | | 3 |
| 2432 | WITNESS POST | EACH | 3 | | | | | | | | | | | | | | 3 |
| 2482 | CHANNEL LINING CLASS IA | TON | 2393 | | | 38 | | | 143 | | | | | | | | 2574 |
| 2483 | CHANNEL LINING CLASS II | TON | 11267 | | | | | | | | | | | | | | 11267 |
| 2488 | CHANNEL LINING CLASS IV | CUYD | 7205 | 320 | 341 | 813 | 1190 | | 524 | 1168 | | | | | | | 14821 |
| 2545 | CLEARING AND GRUBBING | LS | 1 | | | | | | | | | | | | | | 1 |
| 2555 | CONCRETE-CLASS B | CUYD | 103.80 | | 4.80 | | | | | | | | | | | | 523 |
| 2562 | TEMPORARY SIGNS | SOFT | 3500 | | | | | | | | | | | | | | 3500 |
| 2568 | MOBILIZATION | LS | 1 | | | | | | | | | | | | | | 1 |
| 2569 | DEMobilIZATION | LS | 1 | | | | | | | | | | | | | | 1 |
| 2585 | EDGE KEY | LF | | 32 | 59 | | | | | 14 | | | | | | | 105 |
| 2599 | FABRIC-GEOTEXTILE TYPE IV | SOYD | 184523 | | | 2438 | 7597 | | 2515 | 2144 | | | | | | | 199217 |
| 2600 | FABRIC GEOTEXTILE TY IV FOR PIPE | SOYD | 13709 | | 733 | 173 | | 130 | 105 | 482 | | | | | | | 15332 |
| 2650 | MAINTAIN & CONTROL TRAFFIC | LS | 1 | | | | | | | | | | | | | | 1 |
| 2651 | DIVERSIONS (KY 9009 DIVERSION 1 - Sta. 3394+55.56) | LS | 1 | | | | | | | | | | | | | | 1 |
| 2651 | DIVERSIONS (KY 9009 DIVERSION 2 - Sta. 3524+62.35) | LS | 1 | | | | | | | | | | | | | | 1 |
| 2651 | DIVERSIONS (KY 9009 DIVERSION 3 - Sta. 3400+00) | LS | 1 | | | | | | | | | | | | | | 1 |
| 2655 | CROSSOVER 1 | LS | 1 | | | | | | | | | | | | | | 1 |
| 2655 | CROSSOVER 2 | LS | 1 | | | | | | | | | | | | | | 1 |
| 2655 | CROSSOVER 3 | LS | 1 | | | | | | | | | | | | | | 1 |
| 2671 | PORTABLE CHANGEABLE MESSAGE SIGN | EACH | 14 | | | | | | | | | | | | | | 14 |
| 2676 | MOBILIZATION FOR MILL & TEXT | LS | 1 | | | | | | | | | | | | | | 1 |
| 2677 | ASPHALT PAVE MILLING & TEXTURING | TON | 1700 | | | | | | | | | | | | | | 1700 |
| 2690 | SAFELOADING | CUYD | 314 | | | | | | | | | | | | | | 314 |

NOTES:

EROSION CONTROL QUANTITIES ARE BASED ON THE PROBABLE AMOUNT OF EROSION CONTROL FEATURES AS ESTIMATED BY THE DESIGNER.

- (A) FOR CONTROLLING DUST CAUSED BY MAINTAINING TRAFFIC ONLY
- (B) END TREATMENT TYPE 1 - 6 FOR MOT
- (C) GUARDRAIL REMOVED SHALL BE TRANSPORTED TO THE BAILY BRIDGE LOT @ 1224 WILKINSON BLVD. IN FRANKFORT, KENTUCKY. PAYMENT SHALL BE INCIDENTAL TO BID ITEM 2381 (REMOVE GUARDRAIL)
- (D) INCLUDES 3901 CUYD FROM DT. NOTES INCLUDES 3260 CUYD FROM PIPE SUM.
- (E) APPROXIMATELY 176 ACRES
- (F) 108.6 CUYD FOR ROW FENCE INSTALLATION 374 CUYD FROM CHANNEL LINING 40 CUYD FROM PIPE SUMMARY
- (G) FOR WRAPPING PIPE TRENCH BACKFILL
- (H) INCLUDES 1000 TONS FOR KY 9009 OVERLAY INCLUDES 500 TONS FOR THE REMOVAL OF THE EXISTING WEST CROSSOVER AND CROSSOVER 1 PAVEMENT OVER THE EXISTING EASTBOUND KY 9009 LANES. SEE CROSSOVER 1 CROSS-SECTIONS FOR MORE INFORMATION. INCLUDES 200 TONS FOR 1.25" MILLING FOR THE REMOVAL OF THE EXISTING LANE DROP PAVEMENT MARKINGS AND CHEVRONS WEST OF STATION 3374+00.
- (I) INCLUDES 2393 CUYD FROM DT. NOTES INCLUDES 179 CUYD FROM PIPE SUM.
- (J) FOR MAINTENANCE OF TRAFFIC
- (K) 52 TONS FROM PERFORATED PIPE DRAINAGE SUMMARY 36 TONS FOR PERF PIPE HEADWALL TY 1-8IN FOR BRIDGE ENDS
- (L) FOR EMBANKMENT AT BRIDGE ENDS
- (M) FOR STABILIZING MEDIAN DITCH WHEN GRADES EXCEED 3%

EARTHWORK CALCULATIONS:

| | |
|--------------------|---------------------------------|
| EMBANKMENT: | 4,050,860 CUYD EMB. |
| | 1,659,400 CUYD ROCK EMB. |
| | 211,218 CUYD RRB |
| | 5,921,478 CUYD EMB. TOTAL |
| EXCAVATION: | |
| | 948,586 CUYD COM. EXC. |
| | 4,579,386 CUYD ROCK EXC. |
| | 66,179 CUYD DIT EXC. |
| | 178,219 CUYD BENCHING |
| | 81,351 CUYD PROFILE BENCHING |
| | 5,853,721 CUYD TOTAL EXCAVATION |

••INCLUDES 1174 CUYD FROM PIPE SUMMARY

The estimate for earthwork calculations is for information only. Assumptions for shrinkage and swell factors are the contractor's responsibility.

THE EARTHWORK SHOWN ABOVE IS FOR INFORMATION ONLY. ASSUMPTIONS FOR SHRINKAGE AND SWELL FACTORS ARE THE CONTRACTOR'S RESPONSIBILITY.

MOUNTAIN PARKWAY
GENERAL SUMMARY

GENERAL SUMMARY

| ITEM | DESCRIPTION | UNIT | KY 9009 | KY 3047 | KY 3046 | RAMP 1 | RAMP 2 | RAMP 3 | RAMP 4 | EAST DR. | CROSSOVER STA. 3360+26 | CROSSOVER STA. 3584+86 | CROSSOVER STA. 3593+26 | DIVERSION STA. 3394+55 | DIVERSION STA. 3524+62 | DIVERSION STA. 3400+00 | TOTALS |
|------------|-------------------------------------------------------|------|---------|---------|---------|--------|--------|--------|--------|----------|------------------------|------------------------|------------------------|------------------------|------------------------|------------------------|---------|
| 2692 | SETTLEMENT PLATFORM | EACH | 2 | | | | | | | | | | | | | | 2 |
| 2696 | SHOULDER RUMBLE STRIPS | LF | 79596 | | | | | | | | | | | | | | 91890 |
| 2701 | TEMP SILT FENCE | LF | 10977 | | | 3927 | 2303 | 3475 | 2589 | | | | | | | | 10977 |
| 2703 | SILT TRAP TYPE A | EACH | 176 | | | | | | | | | | | | | | 176 |
| 2704 | SILT TRAP TYPE B | EACH | 176 | | | | | | | | | | | | | | 176 |
| 2705 | SILT TRAP TYPE C | EACH | 176 | | | | | | | | | | | | | | 176 |
| 2706 | CLEAN SILT TRAP TYPE A | EACH | 176 | | | | | | | | | | | | | | 176 |
| 2707 | CLEAN SILT TRAP TYPE B | EACH | 176 | | | | | | | | | | | | | | 176 |
| 2708 | CLEAN SILT TRAP TYPE C | EACH | 176 | | | | | | | | | | | | | | 176 |
| 2711 | SEDIMENTATION BASIN | CUYD | 100 | | | | | | | | | | | | | | 100 |
| 2712 | CLEAN SEDIMENTATION BASIN | CUYD | 100 | | | | | | | | | | | | | | 100 |
| 2726 | STAKING | LS | 1 | | | | | | | | | | | | | | 1 |
| 2731 | REMOVE STRUCTURE (BRIDGE - Sta. 3388+64) | LS | 1 | | | | | | | | | | | | | | 1 |
| 2731 | REMOVE STRUCTURE (BRIDGE OVER KY 9009 - Sta. 3507+00) | LS | 1 | | | | | | | | | | | | | | 1 |
| 2775 | ARROW PANEL | EACH | 6 | | | | | | | | | | | | | | 6 |
| 2898 | RELOCATE CRASH CUSHION | EACH | 4 | | | | | | | | | | | | | | 4 |
| 3340 | STEEL PIPE-2 1/2 IN | LF | 131.25 | | | | | | | | | | | | | | 131.25 |
| 3343 | STEEL PIPE-4 IN | LF | 126.25 | | | | | | | | | | | | | | 126.25 |
| 5950 | EROSION CONTROL BLANKET | SOYD | 182787 | 540 | | | | | | | | | | | | | 194189 |
| 5952 | TEMP MULCH | SOYD | 567893 | | | | | | 170 | 10692 | | | | | | | 567893 |
| 5953 | TEMP SEEDING AND PROTECTION | SOYD | 425920 | | | | | | | | | | | | | | 425920 |
| 5963 | INITIAL FERTILIZER | TON | 8.0 | | | | | | | | | | | | | | 8 |
| 5964 | MAINTENANCE FERTILIZER | TON | 36.0 | | | | | | | | | | | | | | 36 |
| 5985 | SEEDING AND PROTECTION | SOYD | 509582 | | | | | | | | | | | | | | 509582 |
| 5992 | AGRICULTURAL LIMESTONE | TON | 316.0 | | | | | | | | | | | | | | 316 |
| 6401 | FLEXIBLE DELINEATOR POST-M/W | EACH | 257 | | | | | | | | | | | | | | 361 |
| 6404 | FLEXIBLE DELINEATOR POST-M/Y | EACH | 257 | | | | | | | | | | | | | | 95 |
| 6510 | PAVE STRIPING-TEMP PAINT-4 IN | LF | | 1400 | 4800 | 29 | 21 | 26 | 19 | | | | | | 3000 | 750 | 9950 |
| 6511 | PAVE STRIPING-TEMP PAINT-6 IN | LF | 179170 | | | | | | | | | | | | | | 199220 |
| 6514 | PAVE STRIPING-PERM PAINT-4 IN | LF | | | 4627 | | | | | | 5400 | 4850 | 3600 | 6200 | | | 4627 |
| 6515 | PAVE STRIPING-PERM PAINT-6 IN | LF | 162047 | | | | | | | | | | | | | | 175691 |
| 6517 | PAVE STRIPING-PERM PAINT-12 IN | LF | 740 | | | 4461 | 2485 | 3970 | 2728 | | | | | | | | 1584 |
| 6568 | PAVE MARKING-THERMO STOP BAR-24IN | LF | | | | 121 | 191 | 120 | 412 | | | | | | | | 127 |
| 6572 | PAVE MARKING-DOTTED LANE EXTEN | LF | | | | | 64 | | 63 | | | | | | | | 940 |
| 6588 | PAVE MARKER TY IVA-BY TEMP | EACH | 2178 | | 75 | 279 | 165 | 275 | 221 | | | | | | | | 2503 |
| 8903 | CRASH CUSHION TY IV CLASS BT TL3 | EACH | 22 | | | | | | | | 70 | 60 | 45 | 75 | | | 22 |
| 24540 | R/W MONUMENT TYPE 3 | EACH | | | | | | | | | | | | | | | 7 |
| 10020NS | FUEL ADJUSTMENT | DOLL | 1078771 | | | | | | | 7 | | | | | | | 1078771 |
| 10030NS | ASPHALT ADJUSTMENT | DOLL | 406383 | | | | | | | | | | | | | | 406383 |
| 20071EC | JOINT ADHESIVE | LF | | | | | | | | | | | | | | | 48289 |
| 20191ED | OBJECT MARKER TY 3 | EACH | 7 | | | | | | | | | | | | | | 10 |
| 20318ES508 | RELOCATE CONC BARRIER WALL | LF | 10120 | | | | | 1 | 1 | | | | | | | | 10120 |
| 22664EN | WATER BLASTING EXISTING STRIPE | LF | | | | | | | | | | | | | | | 5000 |
| 23007EN | CONC MEDIAN BARRIER TY 9T | LF | 11280 | | | | | | | | | | | | | | 11280 |
| 23274EN11F | TURF REINFORCEMENT MAT 1 | SOYD | 1115 | | | | | | | | | | | | | | 1299 |
| 23496EC | MEDIAN CROSSOVER REMOVAL (Sta. 3360+25.68) | EACH | 1 | 184 | | | | | | | | | | | | | 1 |
| 24489EC | INLAID PAVEMENT MARKER | EACH | 614 | | | | | | | | | | | | | | 853 |
| 24543EC | CLEAN (CHANNEL CHANGE) | LF | 920 | | | 69 | 46 | 67 | 57 | | | | | | | | 920 |
| 24663ED | WITNESS R/W MONUMENT TYPE 4 | EACH | | | | | | | | | | | | | | | 1 |
| 24780EC | INTELLIGENT COMPACTION FOR AGGREGATE | TON | 25339 | | | | | | | 1 | | | | | | | 25339 |
| 24781EC | INTELLIGENT COMPACTION FOR ASPHALT | TON | 71326 | | | | | | | | | | | | | | 71326 |
| 24891EC | PAVE MOUNT INFRARED TEMP EQUIPMENT | SOFT | 1021041 | | | | | | | | | | | | | | 1021041 |

NOTES:

EROSION CONTROL QUANTITIES ARE BASED ON THE PROBABLE AMOUNT OF EROSION CONTROL FEATURES AS ESTIMATED BY THE DESIGNER.

- (A) AS DIRECTED BY THE ENGINEER
- (B) FOR REMOVAL OF THE EXISTING WEST CROSSOVER (Sta. 3360+25.68)
- (C) 12927 SOYD FOR DITCH LINING AND REMAINING TO BE PLACED ON 3:1 SLOPES AND STEEPER OR AS DIRECTED BY THE ENGINEER
- (D) FOR USE AS DIRECTED BY THE ENGINEER

GENERAL SUMMARY

| ITEM | DESCRIPTION | UNIT | KY 9009 | KY 3047 | KY 3046 | RAMP 1 | RAMP 2 | RAMP 3 | RAMP 4 | EAST DR. | CROSSOVER STA. 3360+26 | CROSSOVER STA. 3584+86 | CROSSOVER STA. 3593+26 | DIVERSION STA. 3394+55 | DIVERSION STA. 3524+62 | DIVERSION STA. 3400+00 | TOTALS |
|------------|-------------------------------------------------------|------|---------|---------|---------|--------|--------|--------|--------|----------|------------------------|------------------------|------------------------|------------------------|------------------------|------------------------|---------|
| 2692 | SETTLEMENT PLATFORM | EACH | 2 | | | | | | | | | | | | | | 2 |
| 2696 | SHOULDER RUMBLE STRIPS | LF | 79596 | | | | | | | | | | | | | | 91890 |
| 2701 | TEMP SILT FENCE | LF | 10977 | | | 3927 | 2303 | 3475 | 2589 | | | | | | | | 10977 |
| 2703 | SILT TRAP TYPE A | EACH | 176 | | | | | | | | | | | | | | 176 |
| 2704 | SILT TRAP TYPE B | EACH | 176 | | | | | | | | | | | | | | 176 |
| 2705 | SILT TRAP TYPE C | EACH | 176 | | | | | | | | | | | | | | 176 |
| 2706 | CLEAN SILT TRAP TYPE A | EACH | 176 | | | | | | | | | | | | | | 176 |
| 2707 | CLEAN SILT TRAP TYPE B | EACH | 176 | | | | | | | | | | | | | | 176 |
| 2708 | CLEAN SILT TRAP TYPE C | EACH | 176 | | | | | | | | | | | | | | 176 |
| 2711 | SEDIMENTATION BASIN (A) | CUYD | 100 | | | | | | | | | | | | | | 100 |
| 2712 | CLEAN SEDIMENTATION BASIN (A) | CUYD | 100 | | | | | | | | | | | | | | 100 |
| 2726 | STAKING | LS | 1 | | | | | | | | | | | | | | 1 |
| 2731 | REMOVE STRUCTURE (BRIDGE - Sta. 3388+64) | LS | 1 | | | | | | | | | | | | | | 1 |
| 2731 | REMOVE STRUCTURE (BRIDGE OVER KY 9009 - Sta. 3507+00) | LS | 1 | | | | | | | | | | | | | | 1 |
| 2775 | ARROW PANEL | EACH | 6 | | | | | | | | | | | | | | 6 |
| 2898 | RELOCATE CRASH CUSHION | EACH | 4 | | | | | | | | | | | | | | 4 |
| 3340 | STEEL PIPE-2 1/2 IN | LF | 131.25 | | | | | | | | | | | | | | 131.25 |
| 3343 | STEEL PIPE-4 IN | LF | 126.25 | | | | | | | | | | | | | | 126.25 |
| 5950 | EROSION CONTROL BLANKET (C) | SOYD | 182787 | 540 | | | | | | | | | | | | | 194189 |
| 5952 | TEMP MULCH | SOYD | 567893 | | | | | | 170 | 10692 | | | | | | | 567893 |
| 5953 | TEMP SEEDING AND PROTECTION | SOYD | 425920 | | | | | | | | | | | | | | 425920 |
| 5963 | INITIAL FERTILIZER | TON | 8.0 | | | | | | | | | | | | | | 8 |
| 5964 | MAINTENANCE FERTILIZER | TON | 36.0 | | | | | | | | | | | | | | 36 |
| 5985 | SEEDING AND PROTECTION | SOYD | 509582 | | | | | | | | | | | | | | 509582 |
| 5992 | AGRICULTURAL LIMESTONE | TON | 316.0 | | | | | | | | | | | | | | 316 |
| 6401 | FLEXIBLE DELINEATOR POST-M/W | EACH | 257 | | | | | | | | | | | | | | 257 |
| 6404 | FLEXIBLE DELINEATOR POST-M/Y | EACH | | | | 26 | | 46 | 32 | | | | | | | | 361 |
| 6510 | PAVE STRIPING-TEMP PAINT-4 IN | LF | | 1400 | 4800 | 29 | 21 | 26 | 19 | | | | | 3000 | 750 | | 9950 |
| 6511 | PAVE STRIPING-TEMP PAINT-6 IN | LF | 179170 | | | | | | | | | | | | | | 199220 |
| 6514 | PAVE STRIPING-PERM PAINT-4 IN | LF | | | 4627 | | | | | | 5400 | 4850 | 3600 | 6200 | | | 4627 |
| 6515 | PAVE STRIPING-PERM PAINT-6 IN | LF | 162047 | | | 4461 | 2485 | 3970 | 2728 | | | | | | | | 175691 |
| 6517 | PAVE STRIPING-PERM PAINT-12 IN | LF | 740 | | | 121 | 191 | 120 | 412 | | | | | | | | 1584 |
| 6568 | PAVE MARKING-THERMO STOP BAR-24IN | LF | | | | | 64 | | 63 | | | | | | | | 127 |
| 6572 | PAVE MARKING-DOTTED LANE EXTEN | LF | | | | | | | | | | | | | | | 940 |
| 6588 | PAVE MARKER TY IVA-BY TEMP | EACH | 2178 | | 75 | 279 | 165 | 275 | 221 | | | | | | | | 2503 |
| 8903 | CRASH CUSHION TY IV CLASS BT TL3 | EACH | 22 | | | | | | | | 70 | 60 | 45 | 75 | | | 22 |
| 24540 | R/W MONUMENT TYPE 3 | EACH | | | | | | | | | | | | | | | 7 |
| 10020NS | FUEL ADJUSTMENT | DOLL | 1078771 | | | | | | | 7 | | | | | | | 1078771 |
| 10030NS | ASPHALT ADJUSTMENT | DOLL | 406383 | | | | | | | | | | | | | | 406383 |
| 20071EC | JOINT ADHESIVE | LF | | | | | | | | | | | | | | | 48289 |
| 20191ED | OBJECT MARKER TY 3 | EACH | 7 | | 1 | | | | | | | | | | | | 10 |
| 20318ES508 | RELOCATE CONC BARRIER WALL | LF | 10120 | | | | | 1 | 1 | | | | | | | | 10120 |
| 22664EN | WATER BLASTING EXISTING STRIPE | LF | | | | | | | | | | | | | | | 5000 |
| 23007EN | CONC MEDIAN BARRIER TY 9T | LF | 11280 | | | | | | | | | | | | | | 11280 |
| 23274EN1F | TURF REINFORCEMENT MAT 1 | SOYD | 115 | 184 | | | | | | | | | | | | | 1299 |
| 23496EC | MEDIAN CROSSOVER REMOVAL (Sta. 3360+25.68) | EACH | 1 | | | | | | | | | | | | | | 1 |
| 24489EC | INLAID PAVEMENT MARKER | EACH | 614 | | | | | | | | | | | | | | 853 |
| 24543EC | CLEAN (CHANNEL CHANGE) | LF | 920 | | | 69 | 46 | 67 | 57 | | | | | | | | 920 |
| 24663ED | WITNESS R/W MONUMENT TYPE 4 | EACH | | | | | | | | | | | | | | | 1 |
| 24780EC | INTELLIGENT COMPACTION FOR AGGREGATE | TON | 25339 | | | | | | | 1 | | | | | | | 25339 |
| 24781EC | INTELLIGENT COMPACTION FOR ASPHALT | TON | 71326 | | | | | | | | | | | | | | 71326 |
| 24891EC | PAVE MOUNT INFRARED TEMP EQUIPMENT | SOFT | 1021041 | | | | | | | | | | | | | | 1021041 |

NOTES:
 EROSION CONTROL QUANTITIES ARE BASED ON THE PROBABLE AMOUNT OF EROSION CONTROL FEATURES AS ESTIMATED BY THE DESIGNER.
 (A) AS DIRECTED BY THE ENGINEER
 (B) FOR REMOVAL OF THE EXISTING WEST CROSSOVER (Sta. 3360+25.68)
 (C) 12927 SOYD FOR DITCH LINING AND REMAINING TO BE PLACED ON 3:1 SLOPES AND STEEPER OR AS DIRECTED BY THE ENGINEER
 (D) FOR USE AS DIRECTED BY THE ENGINEER

| | | |
|-----------|-----------|-----------|
| COUNTY OF | ITEM NO. | SHEET NO. |
| MAGOFFIN | 10-126.40 | R2R |

General Provisions, Special Notes, and Special Provisions

DIVISION 100 -- GENERAL PROVISIONS

160 N.G.S. (U.S.G.S.) BENCH MARKS

DO NOT DISTURB N.G.S. (U.S.G.S.) BENCH MARKS IN ANY MANNER UNLESS DIRECTED BY THE ENGINEER.

165 BEFORE YOU DIG

THE CONTRACTOR IS INSTRUCTED TO CALL 1-800-752-6007 TO REACH KY 811, THE ONE-CALL SYSTEM FOR INFORMATION ON THE LOCATION OF EXISTING UNDERGROUND UTILITIES. THE CALL IS TO BE PLACED A MINIMUM OF TWO (2) AND NO MORE THAN TEN (10) BUSINESS DAYS PRIOR TO EXCAVATION. THE CONTRACTOR SHOULD BE AWARE THAT OWNERS OF UNDERGROUND FACILITIES ARE NOT REQUIRED TO BE MEMBERS OF THE KY 811 ONE-CALL BEFORE-U-DIG (BUD) SERVICE. THE CONTRACTOR MUST COORDINATE EXCAVATION WITH THE UTILITY OWNERS, INCLUDING THOSE WHOM DO NOT SUBSCRIBE TO KY 811. IT MAY BE NECESSARY FOR THE CONTRACTOR TO CONTACT THE COUNTY COURT CLERK TO DETERMINE WHAT UTILITY COMPANIES HAVE FACILITIES IN THE AREA.

190 DEPARTMENT OF THE ARMY PERMIT AND WATER QUALITY CERTIFICATION APPROVALS

A DEPARTMENT OF THE ARMY (DA) PERMIT, WHICH MAY REQUIRE APPROVAL OF A STATE WATER QUALITY CERTIFICATION FROM THE KENTUCKY DIVISION OF WATER, REGULATES THIS PROJECT AT ONE OR MORE LOCATIONS. PERFORM ALL APPLICABLE WORK IN COMPLIANCE WITH THE CONDITIONS STATED IN THE DA PERMIT AND THE APPROVED WATER QUALITY CERTIFICATION. POST A COPY OF THE DA PERMIT AND THE WATER QUALITY CERTIFICATION IN A CONSPICUOUS PLACE AT THE PROJECT SITE. IF A DA PERMIT OR WATER QUALITY CERTIFICATION APPROVAL IS PENDING, DO NOT WORK IN OR DISTURB THE DESIGNATED AREAS UNTIL OBTAINING THE APPROPRIATE APPROVAL(S). REFER TO NOTICE(S) CONTAINED IN THE CONTRACT BID PROPOSAL FOR DESIGNATED AREA(S) WHERE WORK IS PROHIBITED BY THE ABSENCE OF APPROVAL.

DIVISION 400 -- ASPHALT PAVEMENTS

429 WINTER CLOSDOWN

ANY ASPHALT CONCRETE BASE AND/OR SURFACE COURSE USED AS A RIDING SURFACE EXPOSED TO TRAFFIC DURING WINTER CLOSDOWN PERIODS SHALL CONTAIN NATURAL, CONGLOMERATE, CRUSHED SLAG, CRUSHED GRANITE OR CRUSHED SANDSTONE SAND IN THE PROPORTION OF NO LESS THAN 25% OF THE TOTAL COMBINED COARSE AND FINE AGGREGATE.

444(A) ASPHALT PAVEMENT RIDE QUALITY

PAVEMENT RIDEABILITY REQUIREMENTS, IN ACCORDANCE WITH SECTION 410 OF THE STANDARD SPECIFICATIONS, SHALL APPLY ON THIS PROJECT. CATEGORY A SHALL APPLY.

447 COMPACTION OF ASPHALT MIXTURES

WILL ACCEPT THE COMPACTION OF ASPHALT MIXTURES FURNISHED FOR DRIVING LANES AND RAMPS AT ONE INCH (25 MM) OR GREATER ON THIS PROJECT BY OPTION A ACCORDING TO SUBSECTIONS 402 AND 403 OF THE CURRENT STANDARD SPECIFICATIONS. USE JOINT CORES AS DESCRIBED IN SUBSECTION 402.03.02 FOR SURFACE MIXTURES ONLY. WILL ACCEPT THE COMPACTION OF ALL OTHER ASPHALT MIXTURES BY OPTION B.

455 EDGE KEY

THIS WORK INCLUDES CUTTING OUT THE EXISTING ASPHALT SURFACE TO A MINIMUM DEPTH AND WIDTH AS DETAILED ELSEWHERE IN THE PLANS SO THAT THE NEW SURFACE MAY HEEL INTO THE EXISTING SURFACE. THE CONTRACT UNIT PRICE BID LINEAR FOOT (PER METER) FOR "EDGE KEY" INCLUDES ALL NECESSARY MATERIALS, LABOR AND EQUIPMENT NECESSARY TO PERFORM THE WORK AND DISPOSE OF THE REMOVED ASPHALT MATERIAL.

DIVISION 600 -- STRUCTURES AND CONCRETE

650 STANDARD DRAWINGS

STANDARD DRAWINGS ARE NOT ATTACHED TO THESE PLANS. A STANDARD DRAWING BOOK AND THE HEADWALL SUPPLEMENTAL BOOK MAY BE OBTAINED FROM THE POLICY SUPPORT BRANCH OF THE DEPARTMENT OF ADMINISTRATIVE SERVICES IN FRANKFORT, KY. AT (502)564-4610

CHANNEL CHANGE CONSTRUCTION

THE PROPOSED CHANNEL CHANGES SHALL BE CONSTRUCTED WHILE THE EXISTING FLOW IS MAINTAINED IN THE EXISTING CHANNEL. ONCE CONSTRUCTION OF THE CHANNEL CHANGES ARE NEARLY COMPLETE, THE PROPOSED CHANNEL SHALL BE CLEANED OF ANY EROSION SEDIMENT PRIOR TO TRANSFERING FLOW TO THE NEW CHANNEL LOCATION. ANY DEVIATION FROM THIS CONSTRUCTION TECHNIQUE MUST BE APPROVED BY THE ENGINEER. THE CLEANING OF THE PROPOSED CHANNEL SHALL BE PAID FOR AS "CLEAN CHANNEL CHANGE" PER LINEAR FOOT.

EXISTING PIPE AND HEADWALL REMOVAL

REMOVE PIPE AND REMOVE HEADWALLS THAT ARE REQUIRED FOR THE EXTENSION OF NEW PIPE SHALL BE BID AS INCIDENTAL TO CULVERT PIPE. ALL OTHER REMOVAL OF EXISTING PIPE AND HEADWALLS NOT BEING USED AND WITHIN THE RIGHT OF WAY, WHETHER SHOWN ON THE PLANS OR NOT, SHALL BE INCIDENTAL TO CLEARING AND GRUBBING.

ASPHALT PAVEMENT MTV

USE A MATERIAL TRANSFER VEHICLE (MTV) ACCORDING TO SECTION 403.03.05A OF THE STANDARD SPECIFICATIONS.

SPECIAL NOTES AND SPECIAL PROVISIONS

SPECIAL NOTE 6U STRUCTURAL MASS CONCRETE

SPECIAL NOTE 10Z FOR EXCAVATION AND EMBANKMENT

SPECIAL NOTE 11C FOR DRILLED SHAFTS

SPECIAL NOTE 11D ROCK BLASTING

SPECIAL NOTE 11E BORING AND JACKING STEEL PIPE WITHOUT CARRIER PIPE

SPECIAL NOTE 11F TURF REINFORCEMENT MAT

SPECIAL NOTE 11N LONGITUDINAL PAVEMENT JOINT ADHESIVE

SPECIAL NOTE 11 PORTABLE CHANGEABLE MESSAGE SIGNS

SPECIAL NOTE FOR BARCODES ON PERMANENT SIGNS

SPECIAL NOTE FOR PAVER MOUNTED TEMPERATURE PROFILES

SPECIAL NOTE FOR INTELLIGENT COMPACTION FOR AGGREGATE BASES

SPECIAL NOTE FOR INTELLIGENT COMPACTION FOR ASPHALT MIXTURES EQUIPMENT

SPECIAL PROVISION 69 EMBANKMENT AT BRIDGE END BENT STRUCTURES

SPECIAL NOTE FOR INLAID PAVEMENT MARKERS

CRUSHED STONE BASE INCLUDES 10% ADDITIONAL MATERIAL IN THE BOTTOM 4" OF THE PAVEMENT DESIGN AS A CONSTRUCTION TOLERANCE ON ROCK SUBGRADE

General Provisions, Special Notes, and Special Provisions

DIVISION 100 -- GENERAL PROVISIONS

160 N.G.S. (U.S.G.S.) BENCH MARKS

DO NOT DISTURB N.G.S. (U.S.G.S.) BENCH MARKS IN ANY MANNER UNLESS DIRECTED BY THE ENGINEER.

165 BEFORE YOU DIG

THE CONTRACTOR IS INSTRUCTED TO CALL 1-800-752-6007 TO REACH KY 811, THE ONE-CALL SYSTEM FOR INFORMATION ON THE LOCATION OF EXISTING UNDERGROUND UTILITIES. THE CALL IS TO BE PLACED A MINIMUM OF TWO (2) AND NO MORE THAN TEN (10) BUSINESS DAYS PRIOR TO EXCAVATION. THE CONTRACTOR SHOULD BE AWARE THAT OWNERS OF UNDERGROUND FACILITIES ARE NOT REQUIRED TO BE MEMBERS OF THE KY 811 ONE-CALL BEFORE-U-DIG (BUD) SERVICE. THE CONTRACTOR MUST COORDINATE EXCAVATION WITH THE UTILITY OWNERS, INCLUDING THOSE WHOM DO NOT SUBSCRIBE TO KY 811. IT MAY BE NECESSARY FOR THE CONTRACTOR TO CONTACT THE COUNTY COURT CLERK TO DETERMINE WHAT UTILITY COMPANIES HAVE FACILITIES IN THE AREA.

190 DEPARTMENT OF THE ARMY PERMIT AND WATER QUALITY CERTIFICATION APPROVALS

A DEPARTMENT OF THE ARMY (DA) PERMIT, WHICH MAY REQUIRE APPROVAL OF A STATE WATER QUALITY CERTIFICATION FROM THE KENTUCKY DIVISION OF WATER, REGULATES THIS PROJECT AT ONE OR MORE LOCATIONS. PERFORM ALL APPLICABLE WORK IN COMPLIANCE WITH THE CONDITIONS STATED IN THE DA PERMIT AND THE APPROVED WATER QUALITY CERTIFICATION. POST A COPY OF THE DA PERMIT AND THE WATER QUALITY CERTIFICATION IN A CONSPICUOUS PLACE AT THE PROJECT SITE IF A DA PERMIT OR WATER QUALITY CERTIFICATION APPROVAL IS PENDING. DO NOT WORK IN OR DISTURB THE DESIGNATED AREAS UNTIL OBTAINING THE APPROPRIATE APPROVAL(S). REFER TO NOTICE(S) CONTAINED IN THE CONTRACT BID PROPOSAL FOR DESIGNATED AREA(S) WHERE WORK IS PROHIBITED BY THE ABSENCE OF APPROVAL.

DIVISION 400 -- ASPHALT PAVEMENTS

429 WINTER CLOSDOWN

ANY ASPHALT CONCRETE BASE AND/OR SURFACE COURSE USED AS A RIDING SURFACE EXPOSED TO TRAFFIC DURING WINTER CLOSDOWN PERIODS SHALL CONTAIN NATURAL, CONGLOMERATE, CRUSHED SLAG, CRUSHED GRANITE OR CRUSHED SANDSTONE SAND IN THE PROPORTION OF NO LESS THAN 25% OF THE TOTAL COMBINED COARSE AND FINE AGGREGATE.

444(A) ASPHALT PAVEMENT RIDE QUALITY

PAVEMENT RIDEABILITY REQUIREMENTS, IN ACCORDANCE WITH SECTION 410 OF THE STANDARD SPECIFICATIONS, SHALL APPLY ON THIS PROJECT. CATEGORY A SHALL APPLY.

447 COMPACTION OF ASPHALT MIXTURES

WILL ACCEPT THE COMPACTION OF ASPHALT MIXTURES FURNISHED FOR DRIVING LANES AND RAMPS AT ONE INCH (25 MM) OR GREATER ON THIS PROJECT BY OPTION A ACCORDING TO SUBSECTIONS 402 AND 403 OF THE CURRENT STANDARD SPECIFICATIONS. USE JOINT CORES AS DESCRIBED IN SUBSECTION 402.03.02 FOR SURFACE MIXTURES ONLY. WILL ACCEPT THE COMPACTION OF ALL OTHER ASPHALT MIXTURES BY OPTION B.

455 EDGE KEY

THIS WORK INCLUDES CUTTING OUT THE EXISTING ASPHALT SURFACE TO A MINIMUM DEPTH AND WIDTH AS DETAILED ELSEWHERE IN THE PLANS SO THAT THE NEW SURFACE MAY HEEL INTO THE EXISTING SURFACE. THE CONTRACT UNIT PRICE BID LINEAR FOOT (PER METER) FOR "EDGE KEY" INCLUDES ALL NECESSARY MATERIALS, LABOR AND EQUIPMENT NECESSARY TO PERFORM THE WORK AND DISPOSE OF THE REMOVED ASPHALT MATERIAL.

DIVISION 600 -- STRUCTURES AND CONCRETE

650 STANDARD DRAWINGS

STANDARD DRAWINGS ARE NOT ATTACHED TO THESE PLANS. A STANDARD DRAWING BOOK AND THE HEADWALL SUPPLEMENTAL BOOK MAY BE OBTAINED FROM THE POLICY SUPPORT BRANCH OF THE DEPARTMENT OF ADMINISTRATIVE SERVICES IN FRANKFORT, KY. AT (502)564-4610

CHANNEL CHANGE CONSTRUCTION

THE PROPOSED CHANNEL CHANGES SHALL BE CONSTRUCTED WHILE THE EXISTING FLOW IS MAINTAINED IN THE EXISTING CHANNEL. ONCE CONSTRUCTION OF THE CHANNEL CHANGES ARE NEARLY COMPLETE, THE PROPOSED CHANNEL SHALL BE CLEANED OF ANY EROSION SEDIMENT PRIOR TO TRANSFERING FLOW TO THE NEW CHANNEL LOCATION. ANY DEVIATION FROM THIS CONSTRUCTION TECHNIQUE MUST BE APPROVED BY THE ENGINEER. THE CLEANING OF THE PROPOSED CHANNEL SHALL BE PAID FOR AS "CLEAN CHANNEL CHANGE" PER LINEAR FOOT.

EXISTING PIPE AND HEADWALL REMOVAL

~~REMOVES PIPES AND REMOVES HEADWALLS THAT ARE REQUIRED FOR THE EXTENSION OF NEW PIPE SHALL BE BID AS INCIDENTAL TO CULVERT PIPE. ALL OTHER REMOVAL OF EXISTING PIPE AND HEADWALLS SHALL BE USED AND WITHIN THE BUDGET OF WAY, WHETHER SHOWN ON THE PLANS OR NOT, SHALL BE INCIDENTAL TO CLEARING AND GRUBBING.~~

ASPHALT PAVEMENT MTV

USE A MATERIAL TRANSFER VEHICLE (MTV) ACCORDING TO SECTION 403.03.05A OF THE STANDARD SPECIFICATIONS.

SPECIAL NOTES AND SPECIAL PROVISIONS

SPECIAL NOTE 6U STRUCTURAL MASS CONCRETE

SPECIAL NOTE 10Z FOR EXCAVATION AND EMBANKMENT

SPECIAL NOTE 11C FOR DRILLED SHAFTS

SPECIAL NOTE 11D ROCK BLASTING

SPECIAL NOTE 11E BORING AND JACKING STEEL PIPE WITHOUT CARRIER PIPE

SPECIAL NOTE 11F TURF REINFORCEMENT MAT

SPECIAL NOTE 11N LONGITUDINAL PAVEMENT JOINT ADHESIVE

SPECIAL NOTE 11 PORTABLE CHANGEABLE MESSAGE SIGNS

SPECIAL NOTE FOR BARCODES ON PERMANENT SIGNS

SPECIAL NOTE FOR PAVER MOUNTED TEMPERATURE PROFILES

SPECIAL NOTE FOR INTELLIGENT COMPACTION FOR AGGREGATE BASES

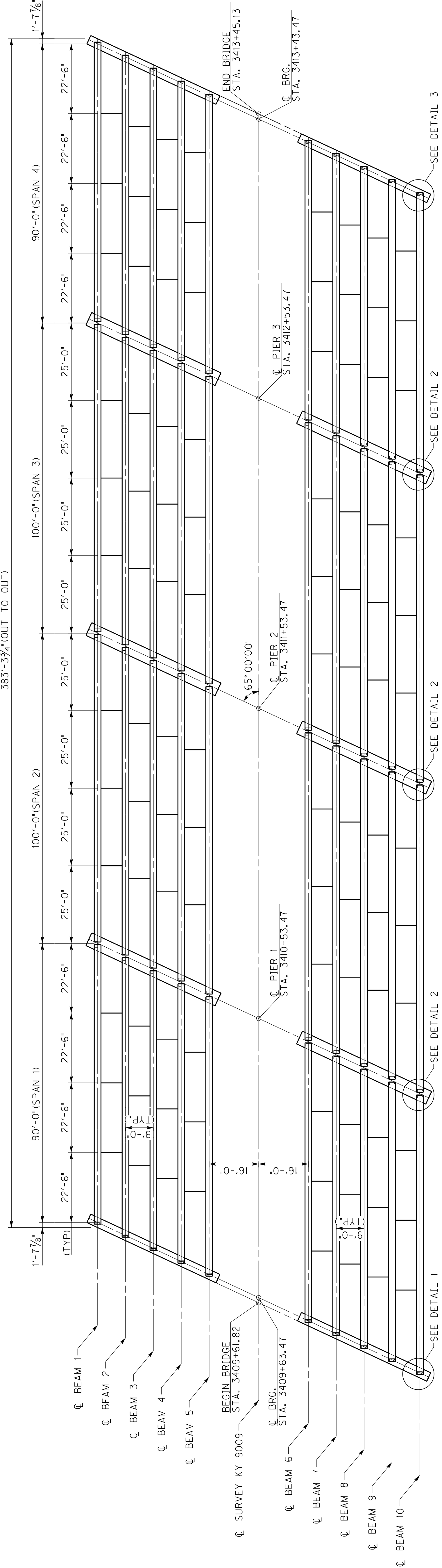
SPECIAL NOTE FOR INTELLIGENT COMPACTION FOR ASPHALT MIXTURES EQUIPMENT

SPECIAL PROVISION 69 EMBANKMENT AT BRIDGE END BENT STRUCTURES

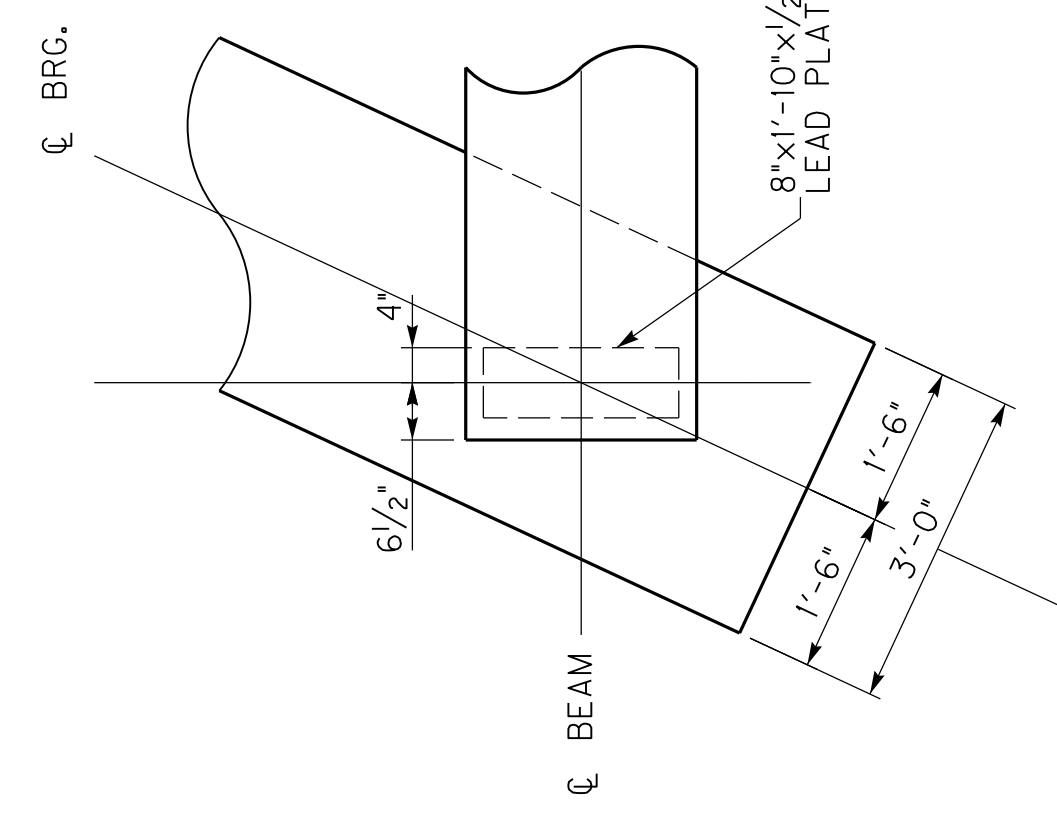
SPECIAL NOTE FOR INLAID PAVEMENT MARKERS

CRUSHED STONE BASE INCLUDES 10% ADDITIONAL MATERIAL IN THE BOTTOM 4" OF THE PAVEMENT DESIGN AS A CONSTRUCTION TOLERANCE ON ROCK SUBGRADE

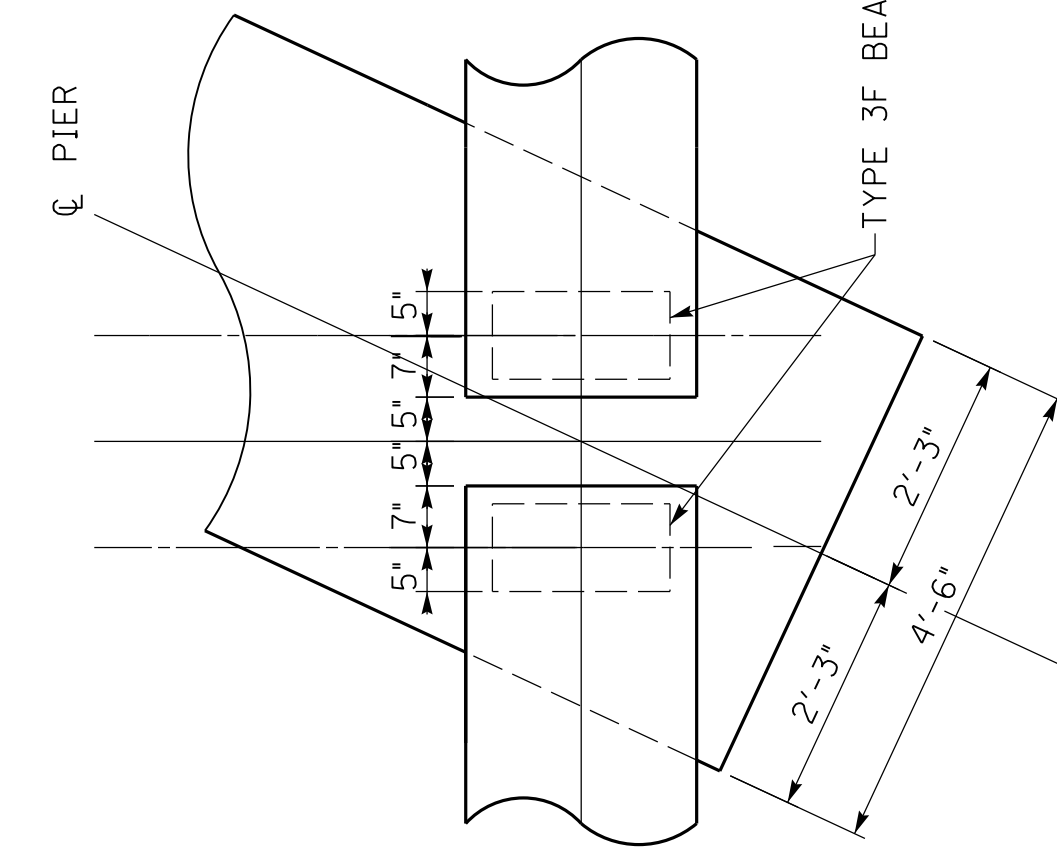
| COUNTY OF | ITEM NO. | SHEET NO. |
|-----------|-----------|-----------|
| MAGOFFIN | 10-126.40 | R2R |



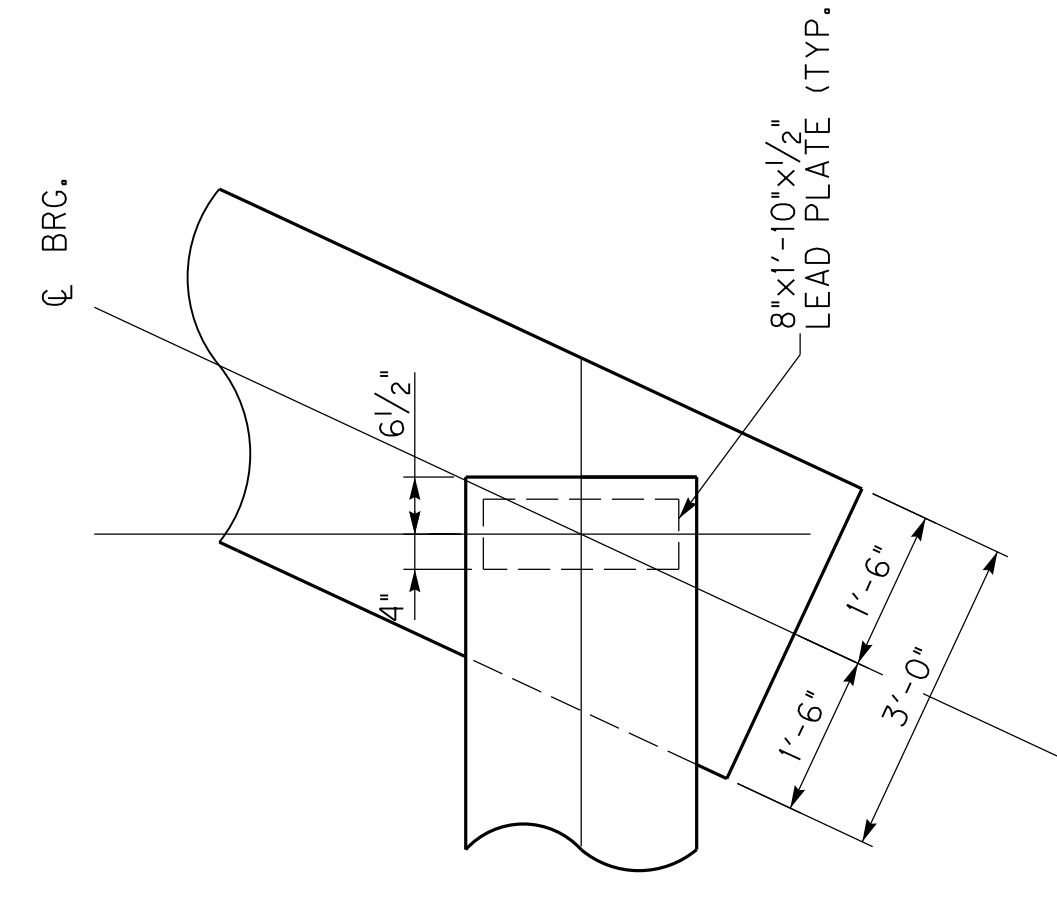
PLAN



DETAIL 1



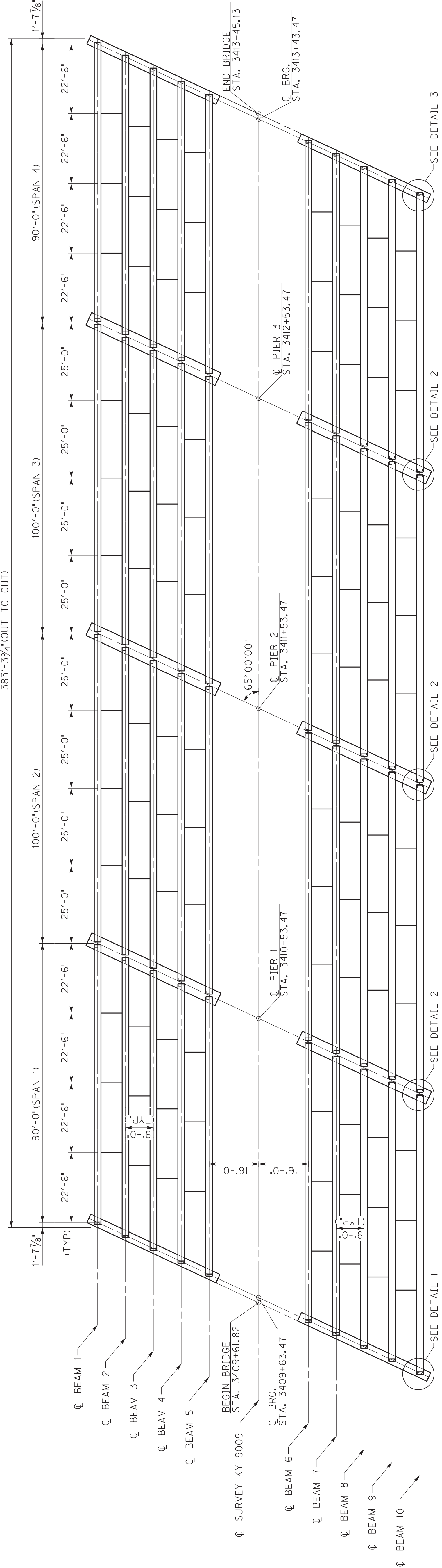
DETAIL 2



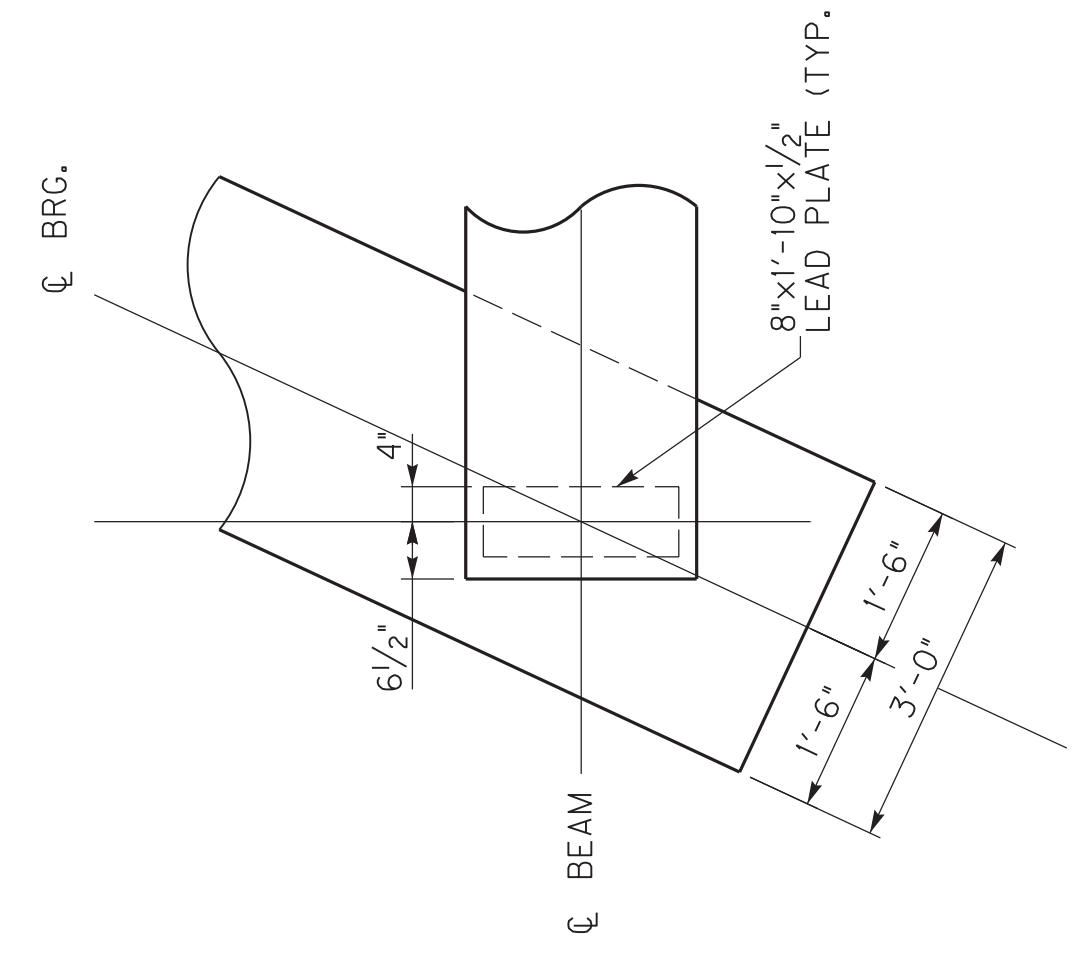
DETAIL 3

| | | | |
|--------------------------------------------------------------------------------------------------------------------------------------------------|-----------------------|-----------------------------|--------------------------|
| DATE: 10/20/17 | DESIGNED BY: J. MILES | REVISION | CHECKED BY: D. CARPENTER |
| | DETAILED BY: J. BURT | | J. MILES |
| Commonwealth of Kentucky DEPARTMENT OF HIGHWAYS | | | |
| COUNTY MAGOFFIN | | | |
| ROUTE KY 9009 | | CROSSING JOHNSON CREEK | |
| FRAMING PLAN | | | |
| PREPARED BY: Nelson Miller Parkway 2500 Louisville, KY 40223 (502) 245-3813 AMERICAN ENGINEERS, INC. PROFESSIONAL ENGINEERING | | | |
| SHEET NO. S14 | | DRAWING NO. 27713 | |

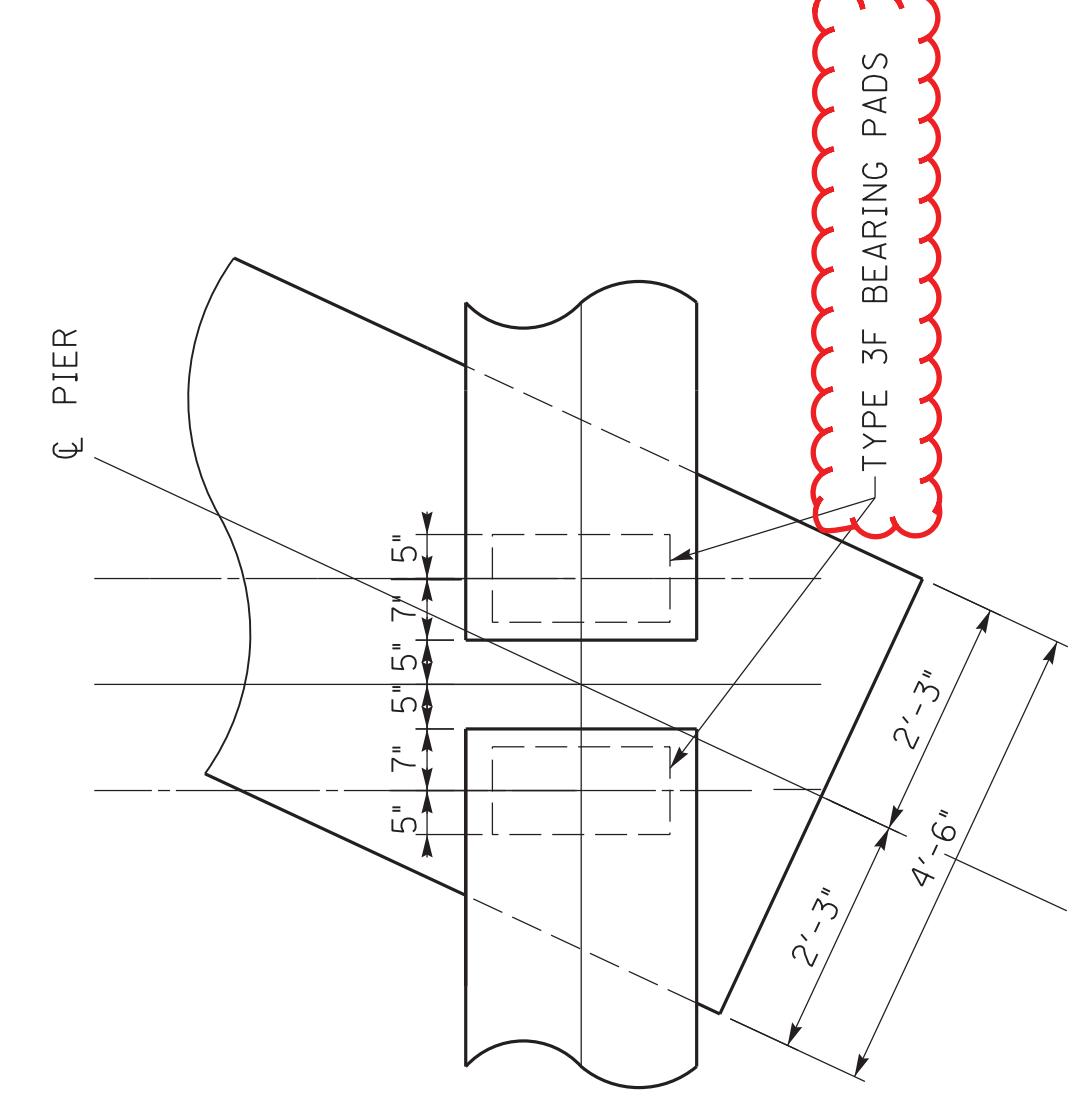
| |
|---------------------------------|
| ITEM NUMBER 10-126.40 |
|---------------------------------|



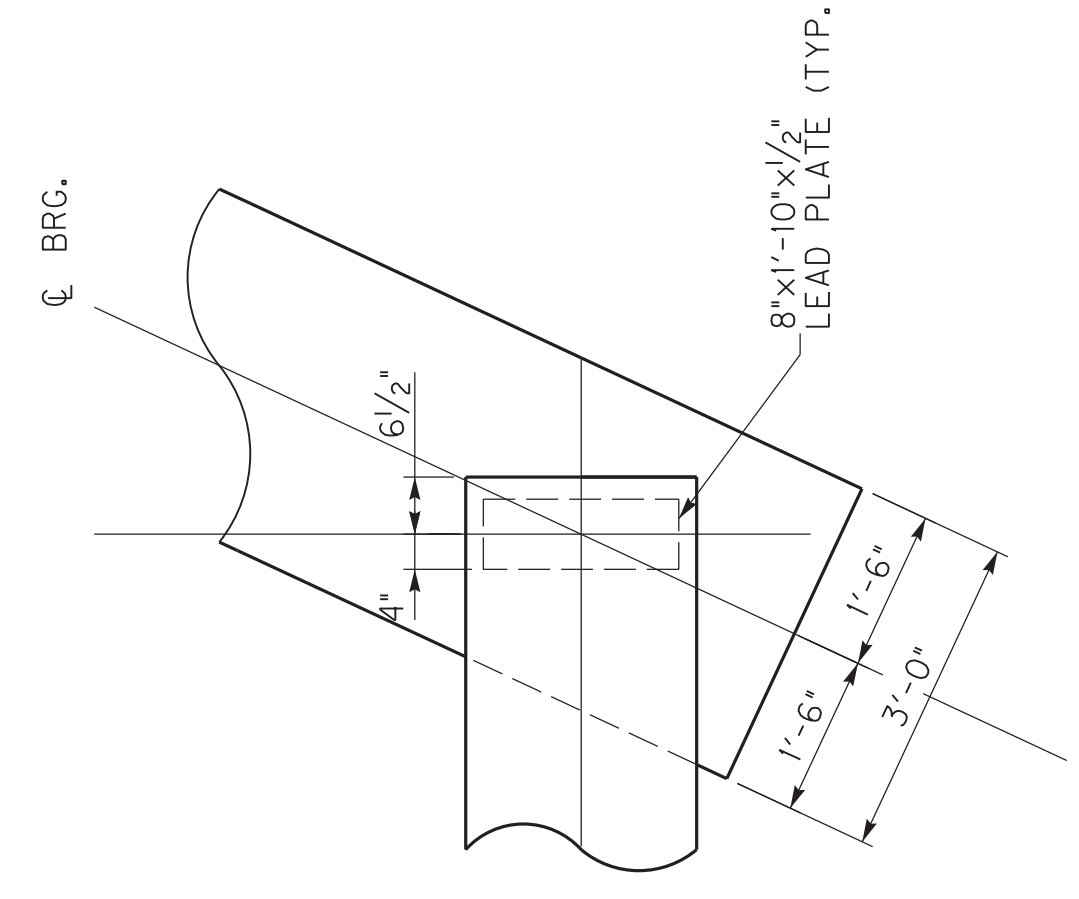
PLAN



DETAIL 1



DETAIL 2



DETAIL 3

| | |
|---------------------------------------------------------------------------------------------------------------------------------------------------------|--------------------------|
| DATE: 10/20/17 | CHECKED BY: D. CARPENTER |
| DESIGNED BY: J. MILES | DETAILED BY: J. MILES |
| REVISION REVISED BY: J. MILES DATE: 10/20/17 | |
| PREPARED BY: Nelson Miller Parkway 2500 Louisville, KY 40223 (502) 245-3813 AMERICAN ENGINEERS, INC. PROFESSIONAL ENGINEERING www.aei.cc | |
| SHEET NO. S14 DRAWING NO. 27713 | |

Commonwealth of Kentucky
 DEPARTMENT OF HIGHWAYS
 COUNTY
MAGOFFIN
 CROSSING
JOHNSON CREEK
 ROUTE
KY 9009
FRAMING PLAN

ITEM NUMBER
10-126.40